

WIRELESS Mini Size **USB ADAPTER**

Version:1.5 Date:1/25/2002

Federal Communications Commission Statement

This device complies with FCC Rules Part 15. Operation is subject to the following two conditions:

This device may not cause harmful interference.

This device must accept any interference received, including interference that may cause undesired operation.

This equipment has been tested and found to comply with the limits for a Class B digital device, pursuant to Part 15 of the FCC Rules. These limits are designed to provide reasonable protection against harmful interference in a residential installation. This equipment generates, uses and can radiate radio frequency energy. If this equipment is not installed and used in accordance with the manufacturer's instructions, it may cause harmful interference to radio communications. However, there is no guarantee that interference will not occur in a particular installation. If this equipment does cause harmful interference to radio or television reception, which can be determined by during the equipment off and on, the user is encouraged to try to correct the interference by one or more of the following measures:

Reorient or relocate the receiving antenna.

Increase the separation between the equipment and receiver.

Connect the equipment to an outlet on a circuit different from that to which the receiver is connected.

Consult the dealer or an experienced radio/TV technician for help.

The use of shielded cables for connection of the monitor to the graphics card is required to assure compliance with FCC regulations. Changes or modifications to this unit not expressly approved by the party responsible for compliance could void the user's authority to operate this equipment.

This equipment complies with FCC radiation exposure limits set forth for an uncontrolled environment. This equipment should be installed and operated with minimum distance 20cm between the radiator and your body.

Manufacturer's Disclaimer Statement

The information in this document is subject to change without notice and does not represent a commitment on the part of the vendor. No warranty or representation, either expressed or implied, is made with respect to the quality, accuracy or fitness for any particular purpose of this document. The manufacturer reserves the right to make changes to the content of this document and/or the products associated with it at any time without obligation to notify any person or organization of such changes. In no event will the manufacturer be liable for direct, indirect, special, incidental or consequential damages arising out of the use or inability to use this product or documentation, even if advised of the possibility of such damages. This document contains materials protected by copyright. All rights are reserved. No part of this manual may be reproduced or transmitted in any form, by any means or for any purpose without expressed written consent of its authors. Product names appearing in this document are mentioned for identification purchases only. All trademarks, product names or brand names appearing in this document are registered property of their respective owners.

Printed in Taiwan

Contents

SECTION 1 ABOUT WIRELESS USB ADAPTER CARD	3
1-1 INTRODUCTION.....	3
1-2 FEATURES	3
1-3 APPLICATIONS	3
1-4 PRODUCT KIT.....	4
SECTION 2 WIRELESS USB ADAPTER HARDWARE INSTALLATION	5
2-1 EQUIPMENT REQUIREMENT.....	5
2-2 WIRELESS USB ADAPTER HARDWARE INSTALLATION	5
2-3 WIRELESS USB ADAPTER SOFTWARE LIMITATION.....	5
SECTION 3 SOFTWARE INSTALLATION AND CONFIGURING	
3-1 AUTO RUN INSTALLATION	6
3-2 INSTALLING WIRELESS USB ADAPTER DRIVER	9
3-3 INSTALLING WIRELESS USB ADAPTER UTILITY.....	10
3-4 INSTALLING WIRELESS USB ADAPTER UTILITY.....	10
3-5 CONFIGURING THE USB ADAPTER USING XP (FOR XP ONLY)	17
3-6 CONFIGURING WIRELESS USB ADAPTER CARD.....	20
APPENDIX A NETWORK CONFIGURATION	23
A-1 NETWORK TOPOLOGY.....	23
<i>Ad-Hoc Mode</i>	23
<i>Infrastructure</i>	24
A-2 ROAMING	25
APPENDIX B GLOSSARY	26

Section 1 About WIRELESS USB ADAPTER CARD

1-1 Introduction

The WIRELESS USB ADAPTER is a long-range, high performance LAN product, which provides the connectivity with the access point to a 2,4 GHz RF network and bridges to an Ethernet backbone. The design of this product is based on AT76C503A (bridge-on-a-chip) module, a highly integrated ASIC designed to combine legacy LANs with wireless LANs. The Wireless USB Adapter supports an outside-the-box LAN connection for USB-enabled PCs with excellent levels of security, robustness and roaming features required for you business with a data rate up to 11Mbps. In compatibility with USB specification 1.1, this USB adapter device also provides energy-saving suspend mode and resume operations. It is a real plug-and-play, Hot-swapping and simple test installation device with the support of full Microsoft network security.

1-2 Features

- IEEE 802.11b Direct Sequence high data rate compatible
- Glueless connection to Intersil PRISMII Direct Sequence Spread Spectrum (DSSS) radio chip set. Able to communicate also with other DSSS radios
- Supports 11 Mbps rates with automatic fallback to 5.5, 2 and 1 Mbps
- Advanced Power Management for power saving mode
- External Dipole antenna to increase the transmission power and receiving sensitivity
- Plug-and-Play installation
- WEP encryption/decryption is accomplished on the fly. 64/128 bit
- Glueless SRAM, Flash interface for data buffering and program storage, supporting up to 16 MB of memory

1-3 Applications

The Serial of LAN products offer a fast, reliable, cost-effective solution, allowing clients to wirelessly access the network in applications such as following:

1. Remote access to corporate network information

E-mail, file transfer and terminal emulation

2. Difficult-to-wire environments

Historical or old buildings, asbestos installations, and open area where wiring is difficult to employ

3. Frequently changing environments

Retailers, manufacturers and banks who frequently rearrange the workplace and change location

4. Temporary LANs for special projects or peak time

Trade shows, exhibitions and construction sites need temporary setup for a short time period. Retailers, airlines and shipping companies need additional workstations for a peak period. Auditors require workgroups at customer sites.

5. Access to database for mobile workers

Doctors, nurses, retailers, white-collar workers need access to database while being mobile in the hospital, retail store or office campus.

6. SOHO (Small Office and Home Office) users

SOHO users need easy and quick installation of a small computer network.

1-4 Product Kit

- ◆ **WIRELESS USB ADAPTER**x 1
- ◆ **Antenna (fixed)**.....x 1
- ◆ **WIRELESS USB ADAPTER Driver utility Disk (2pcs)**.....x 1
- ◆ **USB cable**.....x 1

If any of the listed items are not included or found damaged, please contact your local dealer.

Section 2 WIRELESS USB ADAPTER Hardware Installation

2-1 Equipment Requirement

Installation of WIRELESS USB ADAPTER requires

One PC with USB version 1.1 compliant interface

Windows[®] 98, ME, 2000 OS Software CD, as Windows 95/NT do not support USB.

500 Kbytes free disk space for utility and driver installation

2-2 WIRELESS USB ADAPTER Hardware Installation

To install the wireless USB ADAPTER, please connect one end of the USB cable to the device card first. Then connect the other end of USB cable to the USB port on the your desktop or laptop. The power LED should light up in green when the PC is on.

Adjust the direction of the antenna placement to improve the WIRELESS USB ADAPTER 's performance. Try to place the antenna in t he position which can have the good connection to Access point. Normally, the higher you place the antenna, the better the performance will be.

2-3 WIRELESS USB ADAPTER Software Limitation

Please note that Windows 95 / NT do not support USB. Before installing the USB Adapter, please check that your desktop or laptop is equipped with the Windows 98, ME or 2000 OS.

Section 3 Software Installation And Configuration

3-1 Installing WIRELESS USB Adapter Driver with Auto Run option

1. Insert the Drivers and Utilities CD into the CD or DVD drive

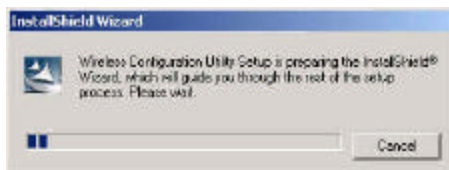
Please make sure to install the software before plug in the device to prevent possible failure of the installation.



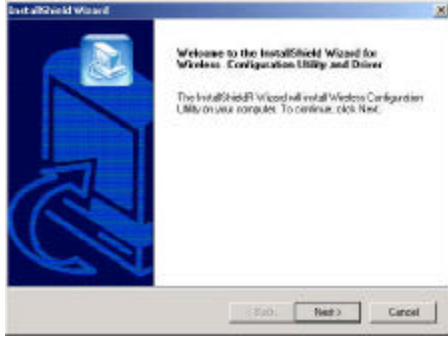
2. Click the "Install" button to start automatic installation .



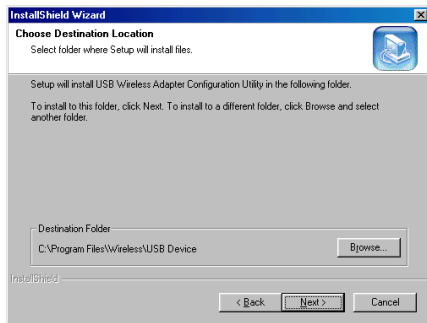
3. Setup is preparing for the installation process.



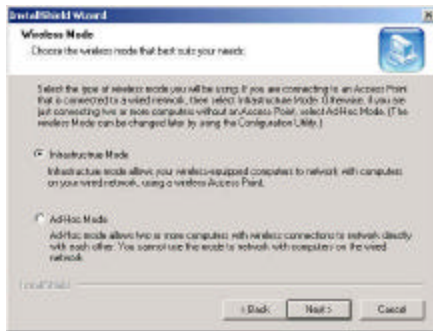
4. When the welcome screen appears, click "Next" to continue.



5. Click “Next” to install to default folder or “Browse” to select different location.

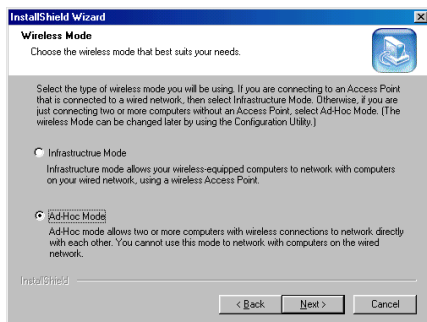


6. Leave the default selection if Access Point is connected to the network.

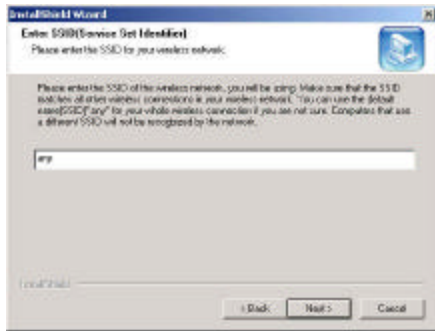


or

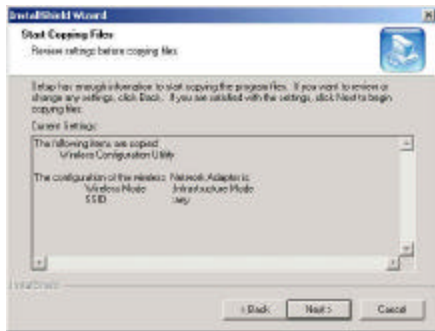
7. select “Ad-Hoc mode” if there are only two or more computers on the network.



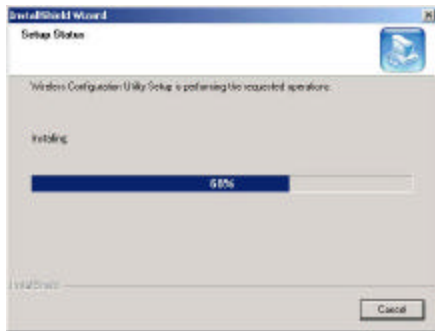
8. Enter SSID then click “Next”.



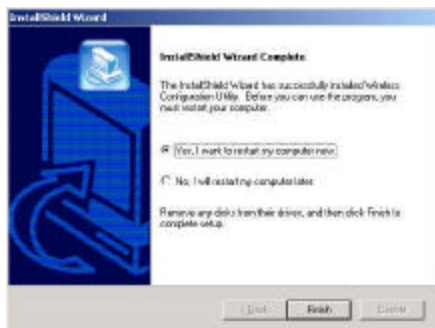
9. Click “Next” to start copying files.



10. Setup is copying files.



11. Upon completion, click “Finish” to restart computer.



3-2 Installing WIRELESS USB Adapter Driver

1. Ensure you have followed the procedure as described in the previous section to finish hardware installation. Plug the two sides of the USB cable into the USB slots of WIRELESS USB ADAPTER and your PC.
2. The Windows[®] will automatically detect the Wireless USB Adapter and prompt you to install the necessary driver. Please make sure that the Setup Utility Driver Disk No. 2 is inserted into your Floppy and click “Next” to begin the installation.



3. Select “Search for the best driver for your device...” and click “Next”.



4. Select “CD-ROM drive”. Windows[®] will automatically find the file. Then click “Next”.



5. The Windows[®] will then acknowledge that it has found the appropriate driver and click "Next".

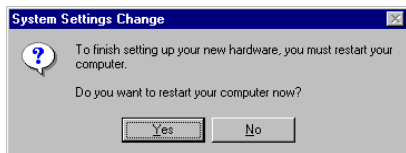


6. Windows® will install the driver and finish the installing.



7. After Windows has finished installing the appropriate files and will ask you to restart your computer.

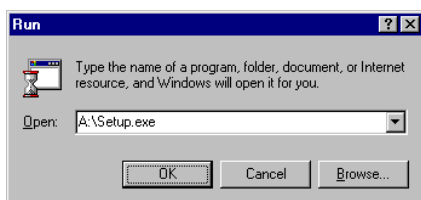
Please just click “Yes”.



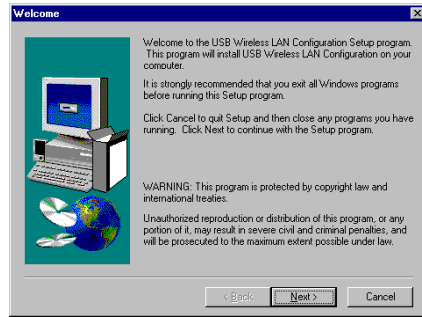
3-3 Installing WIRELESS USB Adapter Utility

To setup the utility, please click the “Start” icon and then “Run”.

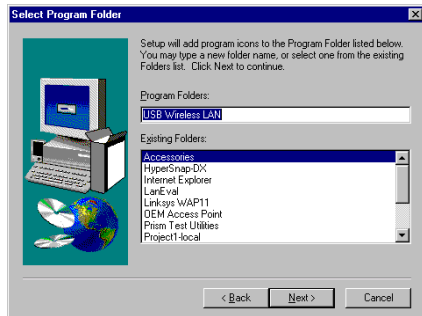
1. Please type “A:\Setup.exe.” or use browse the file in the dialog box. Then click “OK” to start the setup.



2. Please click “Next” for further running.



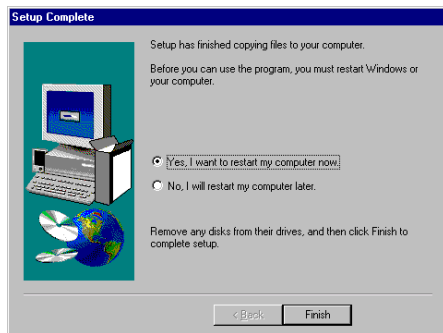
3. Setup will add program icon to the program folder shown as blow, then click “Next” for further setup.



4. After the installation of utility, please click “Finish”.



5. After the installation of utility, please click “Finish”.



3-4 Configuring WIRELESS USB ADAPTER

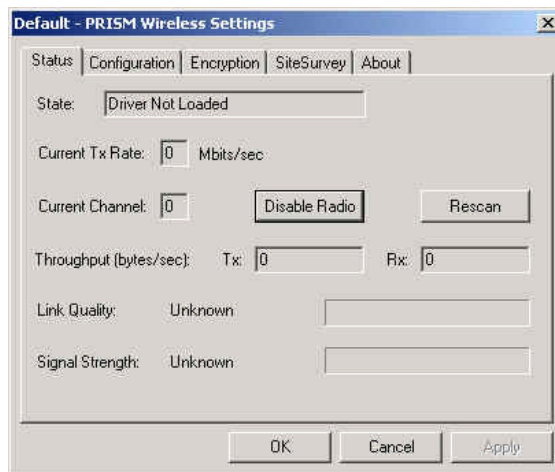
1. Double click the icon to execute program.



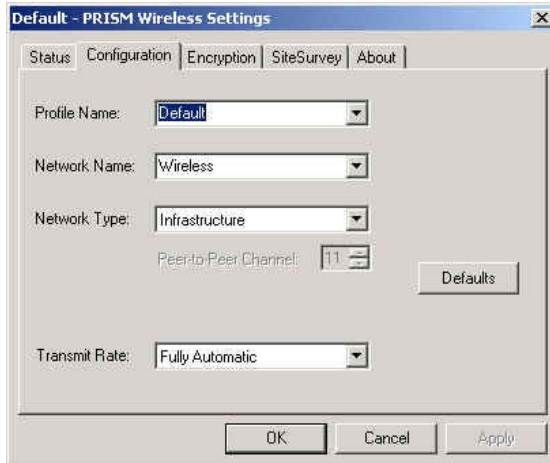
The following section describes and defines the various functions of the Configuration Utility. This utility provides quick access to all adapter settings.

Quick-Launch Icon: After installation is complete, launch the program and a utility icon will Access Point appear in the “Quick-Launch” menu in the lower right hand corner of the screen, near the clock.

Status: The status menu provides information about the current link between the adapter and the base station.



Configuration: Selecting this tab opens the “Configuration” menu. Here you will find options for configuring your adapter.



- **Infrastructure:** This mode allows a wireless LAN to be integrated into an existing wired network through an ACCESS POINT. Infrastructure type networks also permit roaming between Access Points while maintaining connection to all network resources. Infrastructure mode provides additional features, such as WEP security, power saving and extended range.

SSID: An acronym for Service Set Identifier, SSID is the unique name shared among all clients and Access Points in a wireless network. The SSID must be identical for all clients or Access Points participating in the same network. The SSID is case sensitive and must not exceed 30 characters.

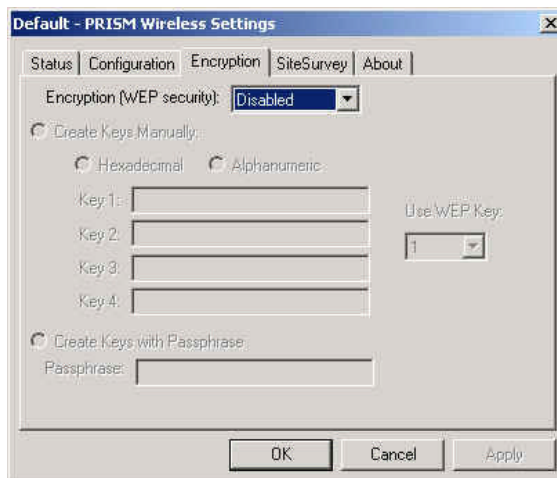
Channel: This setting specifies the default 802.11b channel used by the Wireless LAN communication. In an Infrastructure type network without an Access Point active on the default channel, clients will scan through all available channels searching for a network with matching SSID.

Changing the Channel: Changing the channel is only effective in Ad-Hoc networks. Networks operating in Infrastructure mode automatically scan for a channel. The following table presents contains the operational channel frequency for several countries.

Regulatory Channel Frequency							
Channel	Frequency (MHz)	FCC	Canada	ETSI	France	Spain	Japan
1	2412	?	?	?			
2	2417	?	?	?			
3	2422	?	?	?			

4	2427	?	?	?			
5	2432	?	?	?			
6	2437	?	?	?			
7	2442	?	?	?			
8	2447	?	?	?			
9	2452	?	?	?			
10	2457	?	?	?	?	?	
11	2462	?	?	?	?	?	
12	2467			?		?	
13	2472			?		?	
14	2484						?

Encryption: Selecting the Encryption tab allows you to create new WEP keys.



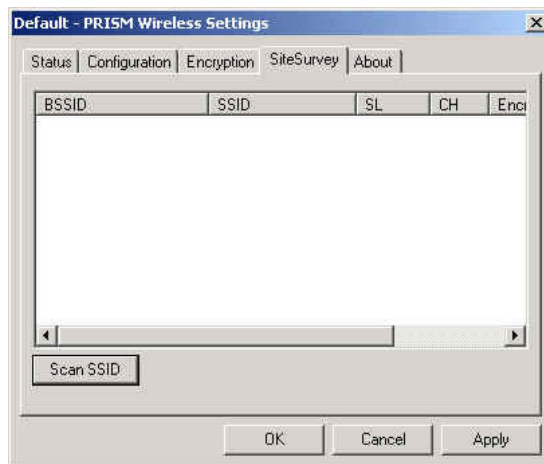
NOTE : An acronym for Wired Equivalent Privacy, WEP is an encryption scheme used to protect your wireless data communications. WEP uses a combination of 64-bit or 128-bit keys to provide access control to your network and encryption security for every data transmission. To decode a data transmission, each wireless client on the network must use an identical 64-bit or 128-bit key. *This feature is only available in Infrastructure Mode and must also be enabled on the Access Point. Select the WEP tab to enable or disable this feature.*

The 64-bit or 128-bit WEP keys can be generated from a user-defined passphrase (any text

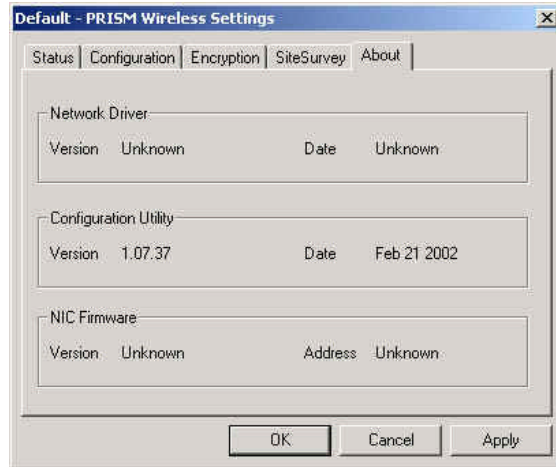
string with a maximum of 32 characters) or a manual entry. To generate encryption keys for each client communicating in the wireless network, complete the following steps:

1. Select “Create with Passphrase” and type the exact same case sensitive text in the Passphrase entry field for each client. Click “Apply” to change.
2. Or, select “Manual Entry” and the “Default Tx Key” of four keys. Click “Apply” to change.
3. Or, select “Manual Entry” and key in the ten hex values in the selected default key. Click “Apply” to change.
4. The 128-bit WEP only has a Tx key.

Site Survey: This function helps you survey the environment



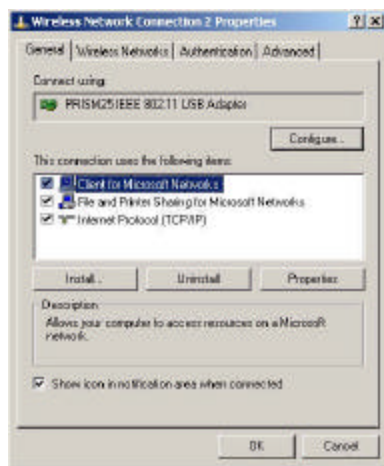
About : The “About” displays the information about Driver, Utility and firmware version of the PC Card.



3-5 Configuring the Mini-Size USB Adapter using XP Built-in Utility (XP only)

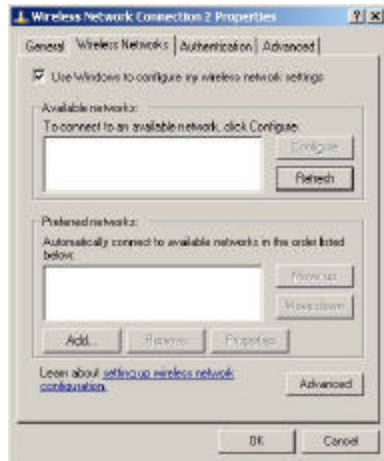
Note: Windows XP has its built-in configuration utility. You may use it to configure the Mini-Size USB Adapter instead of the utility that came with the adapter.

1. Right click “My Network Places ” and select “Properties”.
2. Right click “Wireless Network Connection” icon.



3. Select “Wireless Networks” Tab.

You may click “Refresh” if you currently have existing wireless network and need to search for it.



You may also click “**Add**” to add your adapter to the existing network.

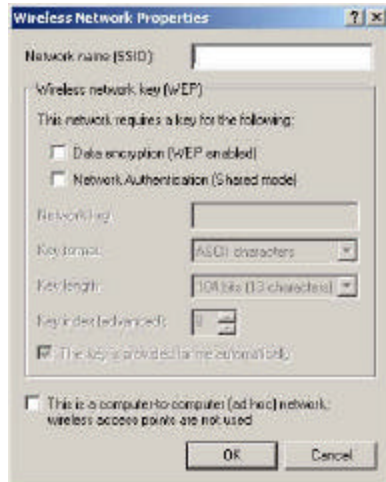
SSID: The SSID is the name shared among all points in a wireless network system. The network name is also known as a Service Set Identifier. The SSID must be identical with the Access Point in a “Infrastructure” mode. If choosing “Ad Hoc”, all clients should share all the same SSID name, make sure you check the box for “**This is a computer-to-computer (ad hoc) network; wireless access points are not used**”. After changing, please click “Ok” to continue.

You may check the box for “Data encryption (WEP enabled)” to encrypt the data.

Data Encryption (WEP enabled) : Specifies whether Wired Equivalent Privacy (WEP) is enabled for this preferred wireless network. If this check box is selected, a network key is used to encrypt your data while it is transmitted over the network. WEP is a set of security services used to protect 802.11 wireless networks from unauthorized access.

Network Authentication (Shared mode): Specifies whether a network key is used to authenticate to this preferred wireless network. Under 802.11 standard for wireless networks, when a network key is used for authentication, the network is operating in Shared Key authentication mode. If a network key is not used for authentication, the network is operating in Open System mode.

By default the box for “**The key is provided for me automatically**” is being checked. If you would like to enter the key yourself, uncheck the box and enter the **Network Key** for the existing network. The **Key format** can be either “ASCII characters” or “Hexadecimal digits”. And for the **key length**, you can either select “40 bits” for 5 characters or “104 bits” for 13 characters.



You may click on “**Advanced**” button to select:

- Any available network (access point preferred)
- Access point (infrastructure) networks only.
- Computer-to-computer (ad hoc) networks only

or

check the box for “**Automatically connect to non-preferred networks**”

4. Select “**Authentication**” Tab.

This option is to provide authenticated network access for wired and wireless Ethernet networks.

Enable network access control using IEEE 802.1X—Specifies whether IEEE 802.1X port-based network access control is used with this connection. If you select this check box, credentials such as smart cards, certificates, and passwords are used for authentication.

Check “**Authenticate as computer when computer information is available**” if you would like to specifies whether the computer attempts authentication to the network when a user is not logged in.

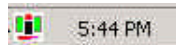
Check “**Authenticate as guest when user or computer information is unavailable**” if you would like to specifies whether the computer attempts authentication to the network as a guest when user or computer information is not available.



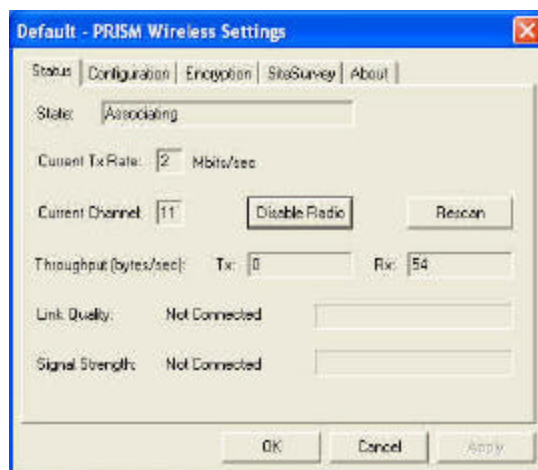
3-6 Configuring MINI SIZE USB ADAPTER

Note: The utility software will be installed at the same time while installing the drivers. After the driver installation, an icon will appear on the task bar on the right.

1. Double click the icon to execute the program.



2. The **“Status” Tab**, it will show the Wireless Network MINI SIZE USB Adapter current connection. Click **“OK”** to close the Configuration Utility.



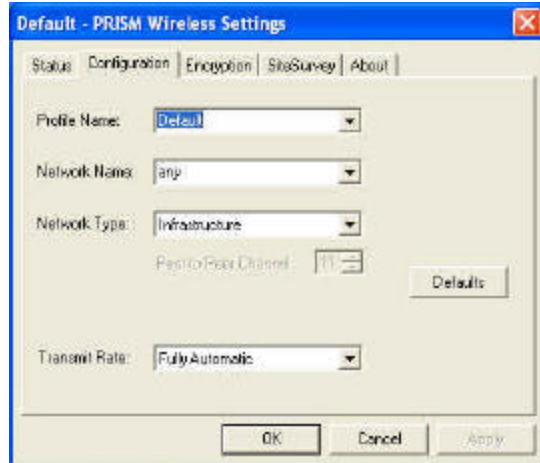
Disable Radio means to disable the usage of radio frequency.

Rescan: means to allow the device to rescan all the other stations or Access Points on the existing wireless networks.

3. The **“Configuration” Tab**, you can change Profile Name, Network Name, Network Type and Transmit Rate.

Profile Name: is for you to choose different profiles which were saved in various configurations.

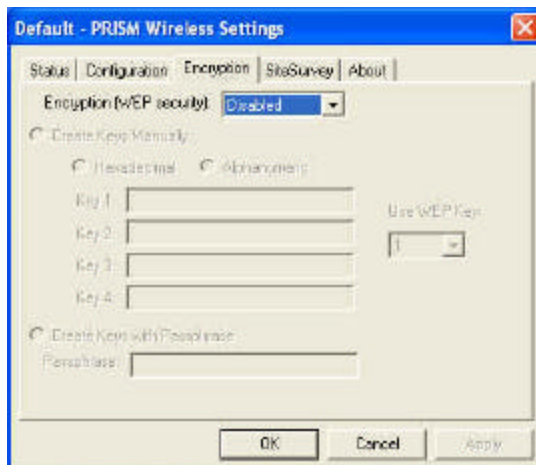
Network Name: means you are able to select different ESSID names or Group name that you have created and saved.



Network Type: The choices are “Access Point ” or “Peer to Peer”. The default is set to “Access Point”.

Transmit Rate : The selections are “Auto 1 or 2Mb”, “5.5Mb”, “11Mb” or “Fully Automatic”. The default is set to “Fully Automatic” so the device will perform auto fall back to justify the actual through put of the network.

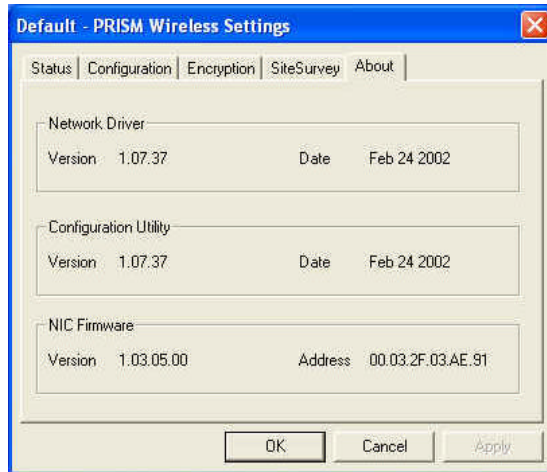
5. **The “Encryption” Tab** , under the drop box the user can select to have WEP Encryption Disabled, 64 bit or 128 bit.



Enter WEP Key Setting. This setting key is to configure the WEP encryption in the wireless network system.

To generate the key, please insert the same PassPhrase in the field and click the “Done” to create the encryption key which must be same as the every point on the Wireless Network system. Then Click the “Apply” to store the setting keys.

6. The **“About” Tab**, is to show the copyright and version information about the driver, utility and firmware.



Appendix A Network Configuration

A-1 Network Topology

Ad-Hoc Mode

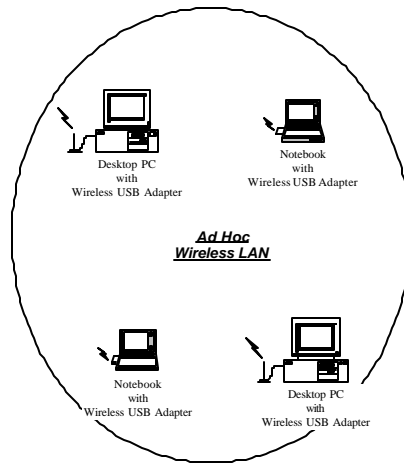


Fig. 1 - Ad-Hoc Wireless LAN

An Ad-Hoc wireless LAN is a group of computers, each equipped with one LAN adapter, connected as an independent wireless LAN. Computers in a specific Ad-Hoc wireless LAN must be configured at the same radio channel and ESSID.

Ad-Hoc wireless LAN is applicable at a departmental scale for a branch or SOHO operation.

Infrastructure

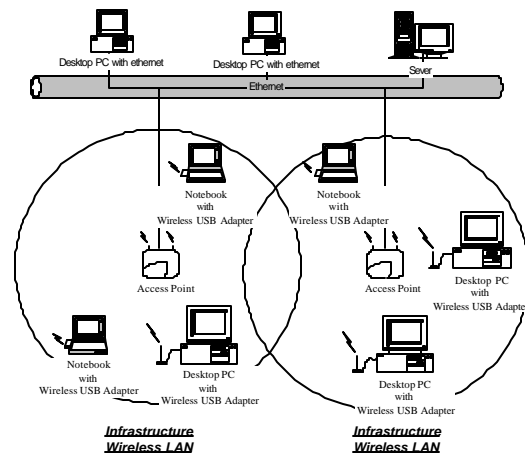


Fig. 2 An Example of Infrastructure Wireless LAN

Access Point provides access to a wired LAN for wireless workstations. An integrated wireless and wired LAN is called an Infrastructure configuration. A group of LAN PC users and an Access Point construct a Basic Service Set (BSS). Each LAN PC in the BSS can talk to any computer in the wired LAN infrastructure via the Access Point.

Infrastructure configuration not only extends the accessibility of a LAN PC to the wired LAN, but also doubles the effective wireless transmission range for 2 LAN PCs. Since the Access Point is able to forward data within its BSS, the effective transmission range in an infrastructure LAN is **doubled**.

BSS ID is, in essence, the ID of each independent Access Point. All LAN PCs configured without roaming options in the independent BSS must be configured with the BSS ID of the Access Point.

Infrastructure is applicable in an enterprise scale for wireless access to central databases, or wireless access for mobile workers.

A-2 Roaming

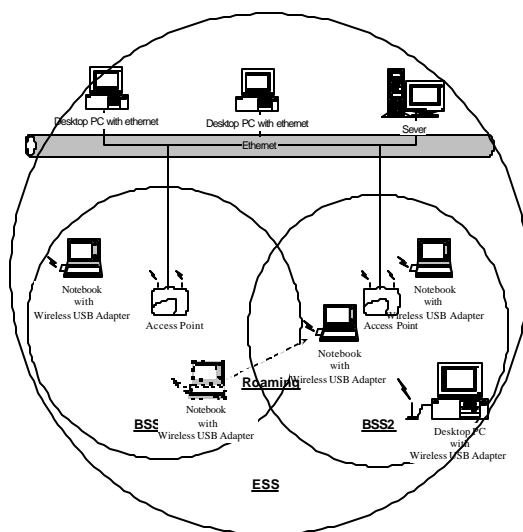


Fig. 3 Roaming in an Extended Service Set (ESS)

An Infrastructure configuration also supports roaming capability for mobile workers. More than one BSS can be configured to be an Extended Service Set (ESS). On account of a continuous connection to the network, users **within an ESS** can roam freely. All LAN PCs and Access Points within one ESS must be configured with the same ESS ID and at the same radio channel.

Appendix B Glossary

Access Point . An internetworking device that seamlessly connects wired and wireless networks.

Ad-Hoc . An Ad-Hoc wireless LAN is a group of computers each with LAN adapters, connected as an independent wireless LAN.

Authentication Type . Indication of an authentication algorithm which can be supported by this node:

1. Open System : Open System authentication is the simplest of the available authentication algorithms. Essentially it is a null authentication algorithm. Any station that requests authentication with this algorithm may become authenticated if dot11AuthenticationType at the recipient station is set to Open System authentication.
 2. Shared Key : Shared Key authentication supports authentication of STAs as either a member of those who know a shared secret key or a member of those who do not.
- Open System authentication is the default authentication algorithm.

Backbone . The core infrastructure of a network. The portion of the network transports information from one central location to another central location where it is unloaded onto a local system.

Basic Rate . the data rate of the AP with the value 1,2,5.5 or 11 Mbps for your selection.

Bridge . An internetworking function that incorporates the lowest 2 layers of the OSI network protocol model.

BSS . BSS stands for “Basic Service Set”. It is an Access Point and all the LAN PCs that associated with it.

Channel . The AP and the with it associated stations will work in this channel. You must set the channel by consulting Appendix B from violating the Specifications.

DSSS . direct sequence spread spectrum

ESS . ESS stands for “Extended Service Set”. More than one BSS is configured to become Extended Service Set. LAN mobile users can roam between different BSSs in an ESS.

ESSID . In infrastructure association , the stations will link to the AP with the same ESSID as they have.

Ethernet . A popular local area data communications network, originally developed by Xerox Corp., that accepts transmission from computers and terminals. Ethernet operates on a 10 Mbps baseband transmission rate, using a shielded coaxial cable or over shielded twisted pair telephone wire.

Ethernet IP Address and SubMask . Please setup them to match your network environment.

For example : If your IP address is 192.168.99.127 and your SubMask is 255.255.255.0. Please set the IP address of the AP to 192.168.99.xx which will not have conflict with other IP address

and set the SubMask of the AP to 255.255.255.0.

Ethernet Mac Address . Don't change it, as this will disable the AP.

Infrastructure . An integrated wireless and wired LAN is called an Infrastructure configuration.

PLCP . physical layer convergence protocol

PPDU . PLCP protocol data unit

Preamble Type . During transmission, the PSDU shall be appended to a PLCP preamble and header to create the PPDU. Two different preambles and headers are defined : the mandatory supported long preamble and header which interoperates with the current 1 and 2 Mbit/s DSSS specification as described in IEEE Std 802.11 - 1999, and an optional short preamble and header. At the receiver, the PLCP preamble and header are processed to aid in demodulation and delivery of the PSDU. The optional short preamble and header is intended for application where maximum throughput is desired and interoperability with legacy and non short preamble capable equipment is not consideration. That is, it is expected to be used only in networks of like equipment that can all handle the optional mode. (IEEE 802.11b standard)

PSDU . PLCP service data unit

Roaming . A LAN mobile user moves around an ESS and enjoys a continuous connection to the Infrastructure network.

RTS Threshold . Transmitters contending for the medium may not be aware of each other. RTS/CTS mechanism can solve this “ Hidden Node Problem”. If the packet size is smaller than the preset RTS Threshold size, the RTS/CTS mechanism will NOT be enabled.

WEP . “Wired Equivalent Privacy” WEP is an encryption scheme used to protect wireless data communication to enable the icon will prevent other stations without the WEP key from linking with the AP.