

2 / 4 PORT KVM USERS MANUAL

Introduction

Thank you for purchasing KVM switch. KVM switch can save your MONEY, TIME, SPACE, EQUIPMENT and POWER. Controlling multiple PCs from One Keyboard, Mouse and VGA Monitor. KVM switch is loaded with features such as hot-key, front panel push button and auto scan control. It has complete keyboard and mouse emulation for simultaneous PCs boot-up process.

Features

- 2/4 port KVM switch is compact size design, easy portable.
- Support Microsoft Intellimouse, Logitech Net Mouse, etc...
- Support DOS, Win3.X, Win95/98/98SE/2000/ME/XP, WinNT, Netware, Unix, Linux
- Hot Plug - Add or Remove Connected PCs for Maintenance Without Powering Down the KVM switch or PCs.
- Very High Video Quality - Up To 1920X1440, Bandwidth: 200MHz
- No Software Required - easy PC selection via Push Buttons, Hot Keys
- Auto Scan Mode for monitoring PCs
- Keyboard status restored when switching PCs
- LED Display for easy status monitoring
- Buzzer sound for switching port confirmation.

Package Contents

2 PORT KVM	4 PORT KVM (Metal)	4 PORT KVM (Plastic)
2 port KVM Switch (Plastic) User's manual	4 port KVM Switch (Metal) User's manual	4 port KVM Switch (Plastic) User's manual

Technical Specifications

Functions	2 PORT KVM	4 PORT KVM(Metal)	4 PORT KVM(Plastic)
PC Port	2	4	4
Console Port	1	1	1
MAX PC Connections	2	4	4
LED	2	4	4
PC Port Connector (All Female Type)	PS/2 Keyboard mini-Din 6 pin PS/2 Mouse Mini-Din 6 pin VGA HDB 15pin		
Console port connector (All Female Type)	PS/2 Keyboard mini-Din 6 pin PS/2 Mouse Mini-Din 6 pin VGA HDB 15pin		
PC selection	Hot Key / Button		
On Screen Display Control	No		
Scan Intervals	8sec.		
Keyboard Emulation	PS2		
Mouse Emulation	PS2		
VGA Resolution	1920X1440		
Bandwidth	200MHz		
Daisy Chain and Levels	NO		
Housing	Plastic	Metal	Plastic
Size	Mini Desktop	Desktop	Desktop
Weight (g)	140g	720g	300g
Dimension (mm)	110(L) X 74(W) X 29(H)	200(L) X 98 (W) X 44(H)	190(L) X 74(W) X 29(H)

System Requirements Specifications

Functions	2 PORT KVM	4 PORT KVM
Console side	One VGA Monitor One PS/2 Keyboard One PS/2 Mouse	One VGA Monitor One PS/2 Keyboard One PS/2 Mouse
Computer Side	Two HDB 15 pin male to male VGA cables Two PS/2 cable male to male for Keyboard Two PS/2 cable male to male for Mouse	Four HDB 15 pin male to male VGA cables Four PS/2 cable male to male for Keyboard Four PS/2 cable male to male for

Product Details

2 PORT KVM
<Diagram>



4 PORT KVM(Plastic)
<Diagram>



4 PORT KVM(Metal) front and rear views :
<Diagram>



Hardware Installation

Before installation, please make sure all of peripherals and computers have been turned off.

1. Connect the Keyboard, VGA, Mouse cables to the computer ports of KVM switch
2. Connect the Keyboard, VGA monitor, and Mouse to console port of KVM switch
3. After Powering on computers and finishing the boot-up process, you can start to go KVM switch.

Note:

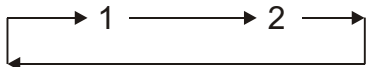
Please don't switch the PC port (i.e. Don't press the push button of KVM switch or run hot key) during the computers are under boot-up process.

Usage

The push Button:

Pressing the button cyclically through all the ports.

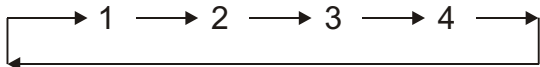
2 PORT KVM



Normally, there is one LED is always lit (i.e. the console is connected to this PC port) for one PC port and the other PC port's LED is off, when you power on KVM switch.

When you select one of two PCs and it is shut down, the selected port LED flashed.

4 PORT KVM



4 PORT KVM(Metal)has separate push button on the panel

You can press the buttons in order like mentioned-above diagram or also press the destination button you want directly.

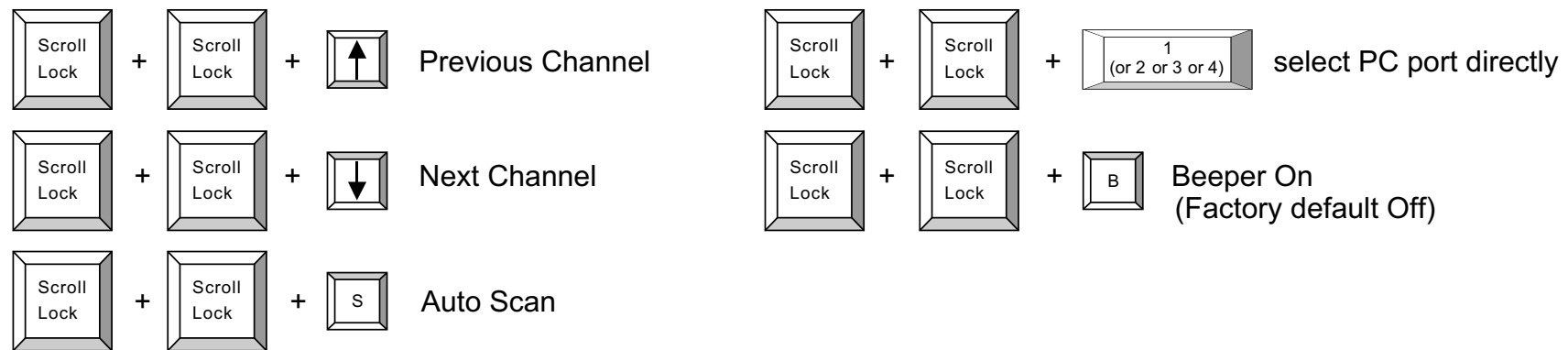
When you select one of four PCs and it is powered on, the selected port LED is lit.

When you select one of four PCs and it is shut down or disconnected a PC, the selected port LED flashed.

Keyboard Hot Key Commands:

You can also conveniently command KVM to switch ports through simple key sequences. To send commands to KVM, The SCROLL LOCK key must be pressed twice within 2 seconds. You will hear a beep for confirmation.

Below are the different commands:



To get out of Auto Scan Mode, Press any key or SPACE bar.

Troubleshooting

Ensure that all cables are well seated. Label all of cables with the number for each respective computer to avoid confusion.

1. KVM switch draws the power from keyboard port of computers. If the computer like laptop computer, notebook computer or the other computer cannot support enough power to KVM switch, please add a DC 5V~9V, 100mA~1A to the power jack. The power jack polarity is center positive.
2. Don't press any keys on the keyboard while the selected computer is booting up. Otherwise, it might cause the keyboard error or keyboard is not detected at PC side.
3. The computer boot up fine, but keyboard doesn't work
Make sure the keyboard works when directly plugged into the computer.
Try a different keyboard, but use only 101, 102 or 104-key keyboard.
4. The Mouse is not detected during PC boot up.
Make sure the mouse works when directly plugged into the computer.
Make sure the mouse is a true PS/2 mouse. A combo mouse will work just as long as it is set for PS/2 mode with the correct adapter.
Try a different mouse.
5. Avoiding moving the mouse or pressing the mouse buttons when switching the port.
6. Notebook computer:
Before powering on notebook computer, we recommend the user to connect the computer to emulation port (not link to console directly) first and then boot it up.
If notebook computer has been boot up already and then the user connect it to KVM switch, please use Hot Key command



to link both of them together