

108Mbps Super G Wireless PC-Card

Quick Installation



Installing the software involves two steps. The first is to install the Utility and the second is to install the Driver.

Installing the software involves two steps. The first is to install the Utility and the second is to install the Driver.

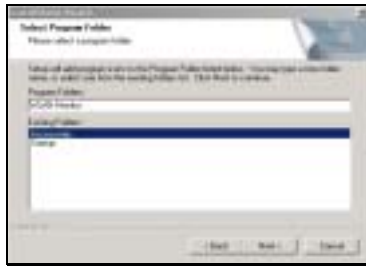
1. Installing The Configuration Utility

Look for the file named "Setup.exe" on the installation CD-ROM. Double-click on it to start the installation for the configuration utility. When this screen appears click **Next**.



To install to the folder C:\Program Files\ Utility click **Next**. Otherwise click on **Browse** to choose an alternate location.

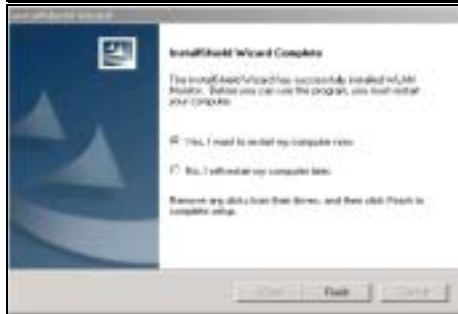




Click **Next** to proceed with the utility installation. The **Select Program Folder** will then appear. You may add a new folder you wish to contain a start up icon or choose one from the list provided. Click **Next** to proceed.



The Setup Status screen will appear to inform you that the installation is in process, as seen below. This same screen will then alert you that all backup files have been removed.



After WLAN Utility has been successfully installed, InstallShield Wizard will prompt you to restart your computer. Select "Yes, I want to restart my computer now," and click on **Finish**.

2. Installing The Driver

After install the utility then Insert The **Super G Wireless PC-Card** into an available 32-bit Card bus slot.



When The **Super G Wireless PC-Card** has been inserted into a 32-bit Card bus slot, the **Found New Hardware** screen appears. Continue with the installation and the screen below should appear. Click on **Yes** to proceed with the installation



Insert the Driver CD into the CD-ROM drive. If you have not inserted the Driver CD into the CD-ROM a prompt such as the one below will appear. Click **OK**.



Otherwise installation will continue with the following screen and come to completion.



3. Using the Configuration Utility for Windows XP, 2000, 98, or ME

Using the Configuration Utility for Windows XP, 2000, 98, or ME

If you are using Windows 2000, ME or 98SE the Configuration Utility program for The **Super G Wireless PC-Card** is called **WLAN**. Once you have installed **WLAN** (the configuration utility), you can read this section of the manual to find out how to monitor and configure your The **Super G Wireless PC-Card** using **WLAN**. Screenshots for this section have been taken in Windows 2000. There are four tabs in the **WLAN** Configuration Utility program. In this section we will describe the uses for each tab in the Configuration Utility window.

To access **WLAN** once it has been installed, just left-click on the **WLAN** icon in the taskbar and click on **Wireless Networks**:



Under the **Configuration Tab** you will find a list of access points to which you may add or change connections.

Configuration Tab



On the left side of the screen are *Available WLANs*, which you may connect to by first selecting the WLAN (it will appear highlighted) and then clicking on **Add**. When you do so a screen like the one below will pop up: In the **Wireless Network Properties** screen you may change the name of the WLAN. You may also enter wireless network encryption keys by checking **Network Authentication (Shared mode)** or **Data encryption (WEP enabled)**. You may enter up to four keys of length 10 or 25 hexadecimal digits. You may also set one of the four keys as a default key.

Data Encryption:
Select **Enabled** or **Disabled**.

Authentication:
Open Authentication - The CardBus is visible to all devices on the network.



If the network you are using is a computer-to-computer network or ad hoc network, no access points are used. You may check the box "This is a computer to computer (ad hoc) network; no access points are used" to enable this option.

On the **Configuration Tab**, click on **Refresh** to call up all the available WLANs. On the right side of the screen is a list of **Preferred WLANs**. These are WLANs that have already been added to the wireless network. Click **New** to rename the WLAN and reset its properties. You will see the **Wireless Network Properties** screen as displayed previously when you click **New**. This is also the same screen that will appear when you click **Properties** on the right side of the **Configuration Tab** screen. Click **Remove** to remove the connection.

On the right side of the screen you may click **Move Up** to move the selected WLAN up in the order it is displayed on the **Preferred WLANs** screen. You may click **Move Down** to move the selected WLAN down in the order in which it is displayed.

The **Advance** button allows the user to set the WLAN type to connect: infrastructure and ad hoc network, infrastructure network only, or ad hoc network only. You may also automatically connect to non-preferred networks by checking the option.

When you are done entering the settings and options for the wireless network click on **OK**, **Cancel**, or **Apply**. **OK** places the settings into effect and closes the graphical user interface (GUI). **Cancel** makes invalid all settings entered. **Apply** implements the setting entered, but does not close the GUI.

Under the **Status Tab** you will find information on the connection state, hardware information, and advanced state.

Status Tab



Settings under **Connected State** are the **Connection status** (connected or disconnected), **SSID**, **Network type** (infrastructure or Ad Hoc), **WEP Status** (enabled or disabled), **Speed** (of the wireless connection), and **Signal Strength** (a colored bar shows the intensity of the radio signals in the network).

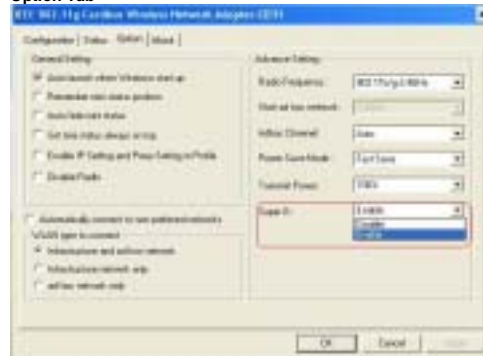
Under **Hardware Information** the Media Access Control (MAC) address of the hardware (WLAN cardbus card) is given. The MAC address is a factory given address that cannot be changed.

Advanced State shows the **Radio Status** (ON or OFF).

Click **OK** to accept the connection status and exit the GUI. Click **Cancel** to not accept the status settings and exit the GUI.

Under the **Option Tab** general settings and advanced settings are shown.

Option Tab



Under General Setting

That Cardbus Setting state.

Under Advance Setting

To include **Radio ,Super G function** to connect the network without the WLAN cardbus card.

Under WLAN type to connect

Wireless mode used when connecting Infrastructure and Ad-Hoc two different access point network environment

Settings under **Connected State** are the **Connection status** (connected or disconnected), **SSID**, **Network type** (infrastructure or Ad Hoc), **WEP Status** (enabled or disabled), **Speed** (of the wireless connection), and **Signal Strength** (a colored bar shows the intensity of the radio signals in the network).

The **About Tab** gives the utility version number of the WLAN utility.
About Tab

