



One USB2.0 Port MFP Server Quick Installation Guide



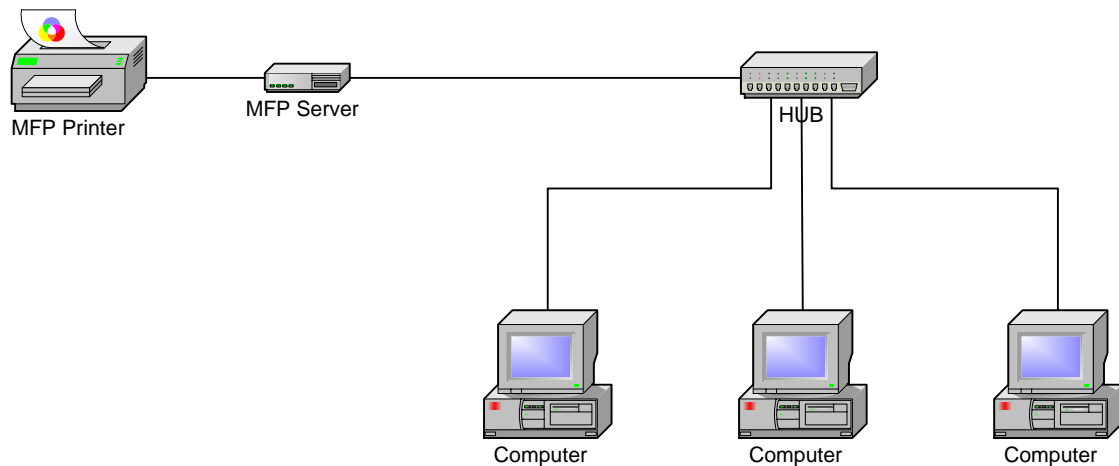
V1.0

Copyright EUSSO Technologies, Inc. All rights reserved.

Packing List:

- One MFP server
- One external AC power adapter
- One Setup CD includes user manual for Windows 2000/XP
- One quick installation guide (this one)

Wired Network with MFP Server:

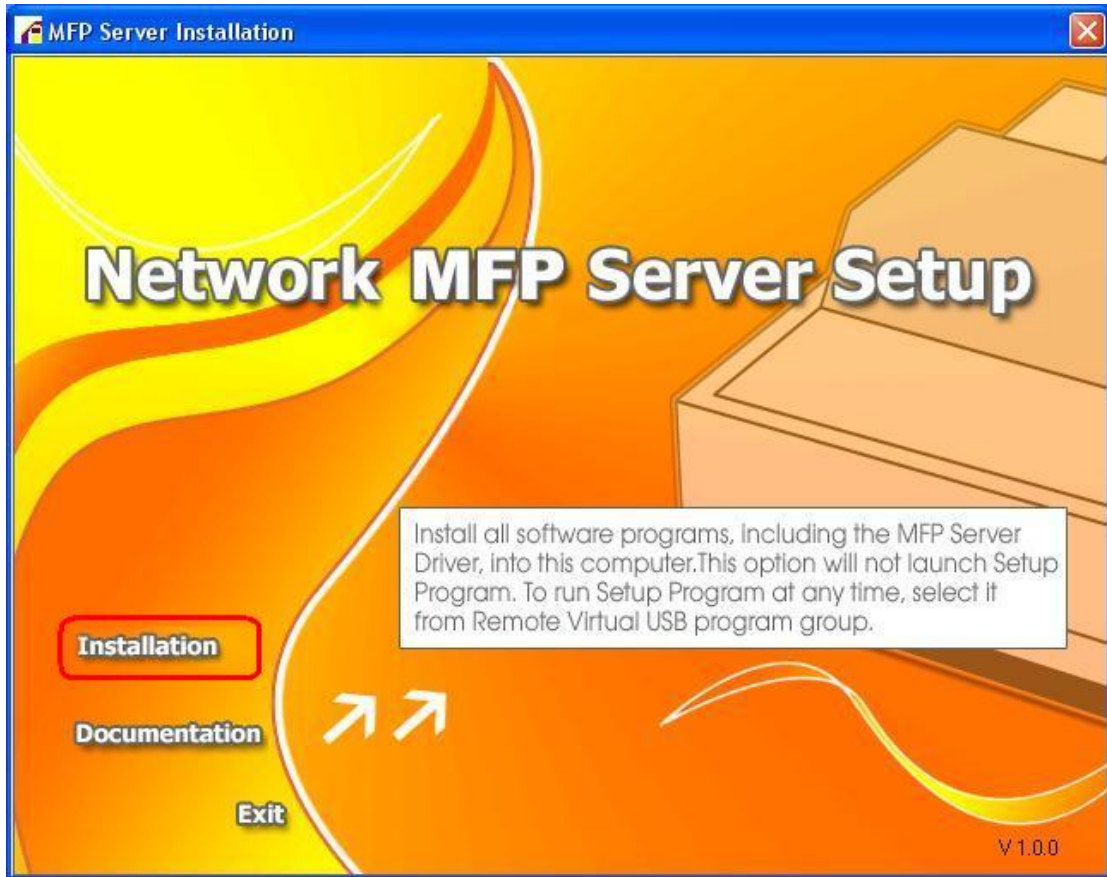


Hardware Installation:

1. Connect one end of the UTP cable to the Ethernet port on MFP Server and the other end to a wall jack or HUB.
2. Connect the power adapter.
3. Connect the USB cable to the USB port on the side of MFP Server and the other end to your MFP device.

Software Installation:

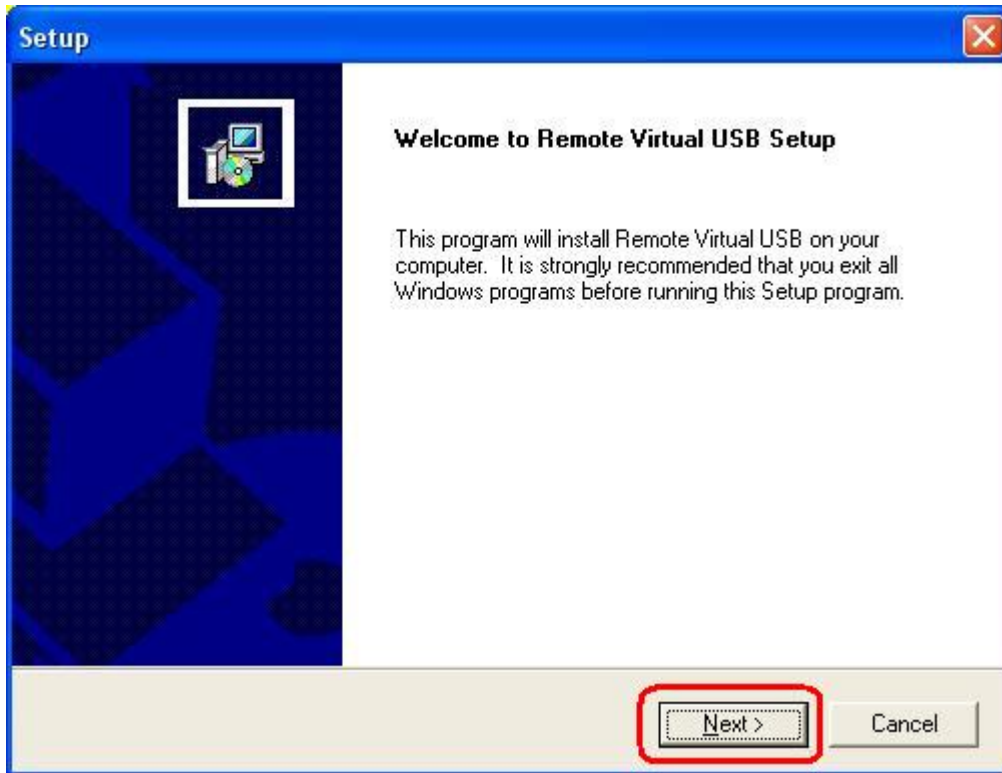
1. Insert the MFP server setup CD. If the start-up screen does not appear, double-click **My Computer**, double-click the **CD-ROM** icon, and then double-click **autorun.exe**.
2. Choose **Installation** to install all software programs.



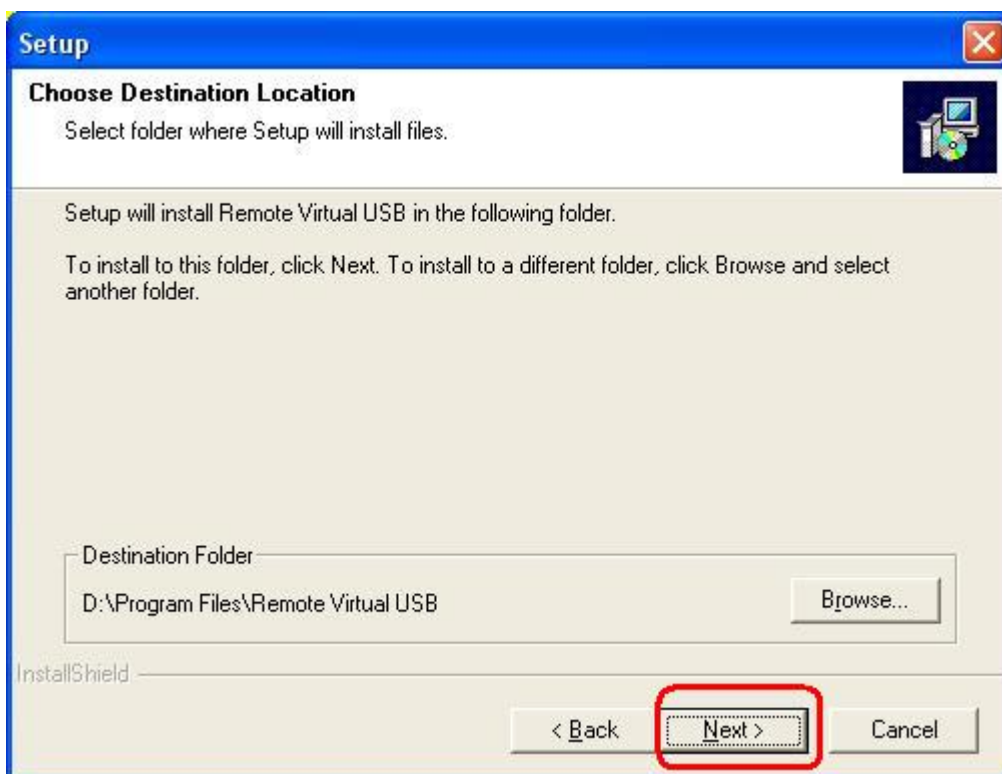
3. Click **OK**.



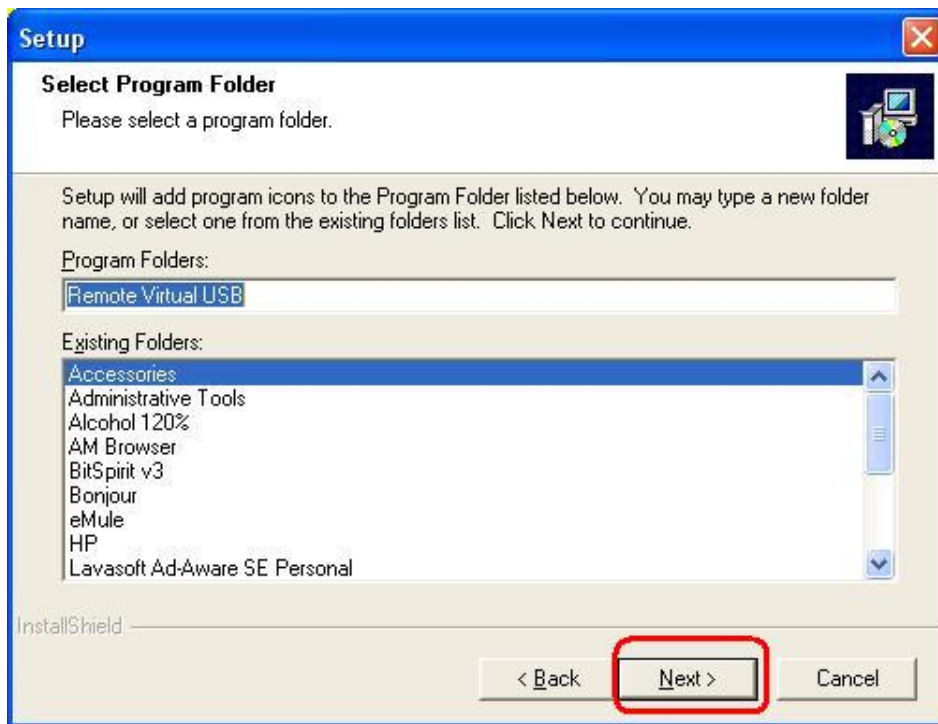
4. Click **Next**.



5. Click **Next**.



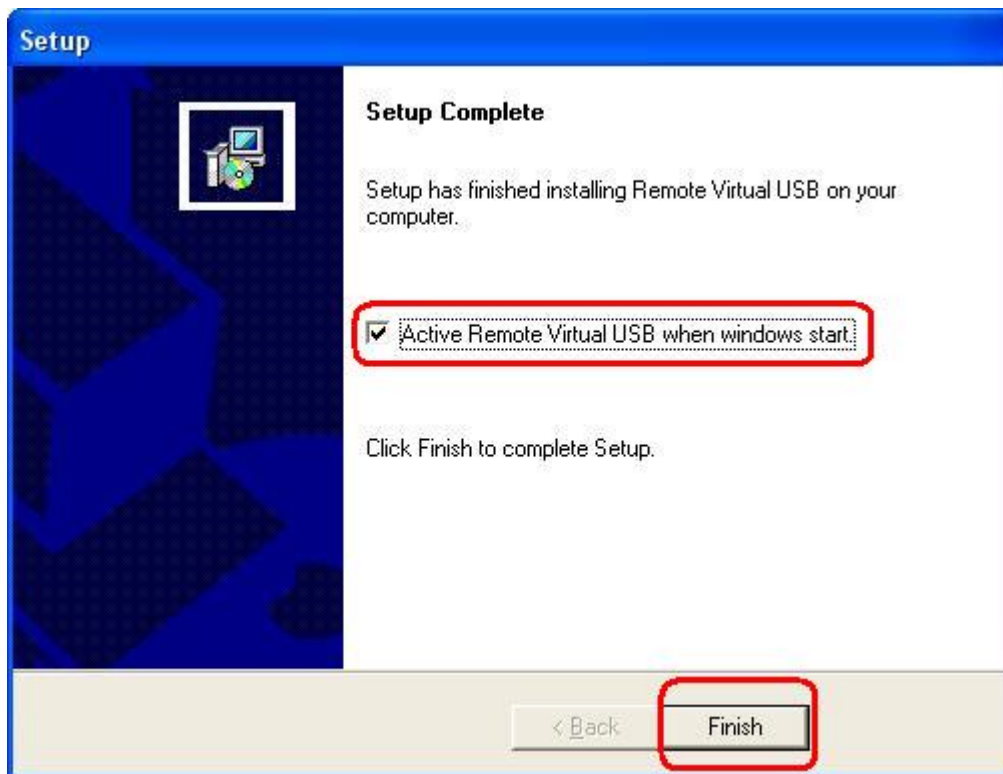
6. Click **Next**.



7. Click **OK**.



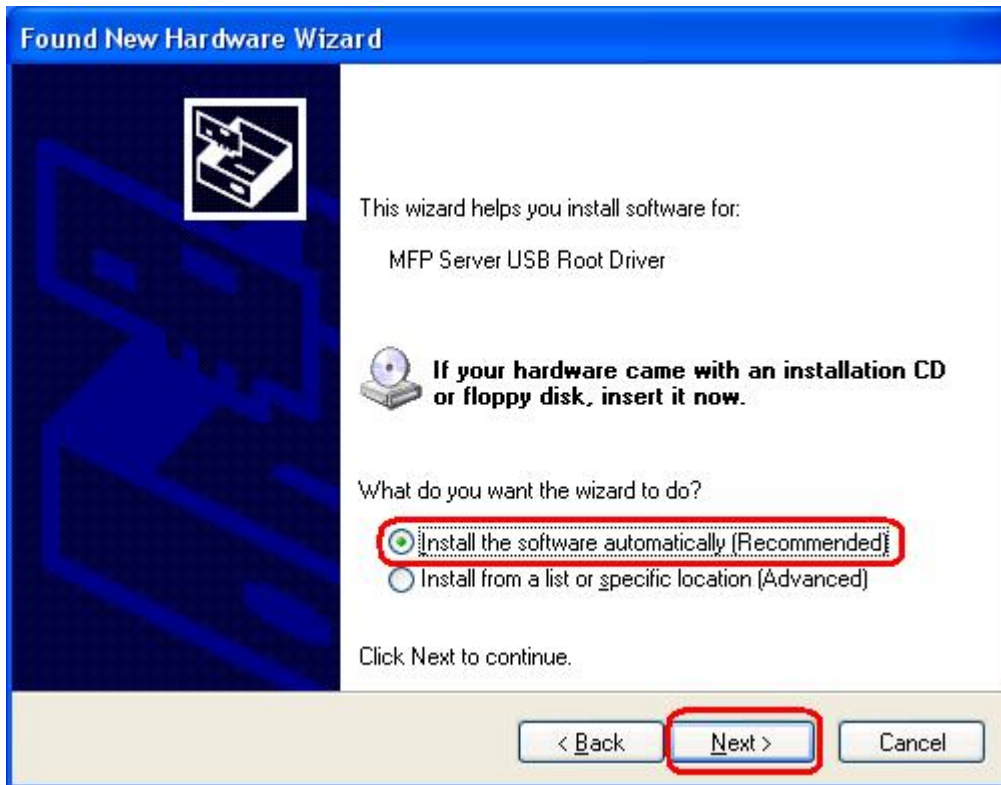
8. If you would like the MFP server software to run automatically when starting your computer (recommended), leave this box checked and click **Finish**.



9. Select **No, not this time**, and then click **Next**.



10. Select **Install the software automatically (Recommended)**, and then click **Next**.



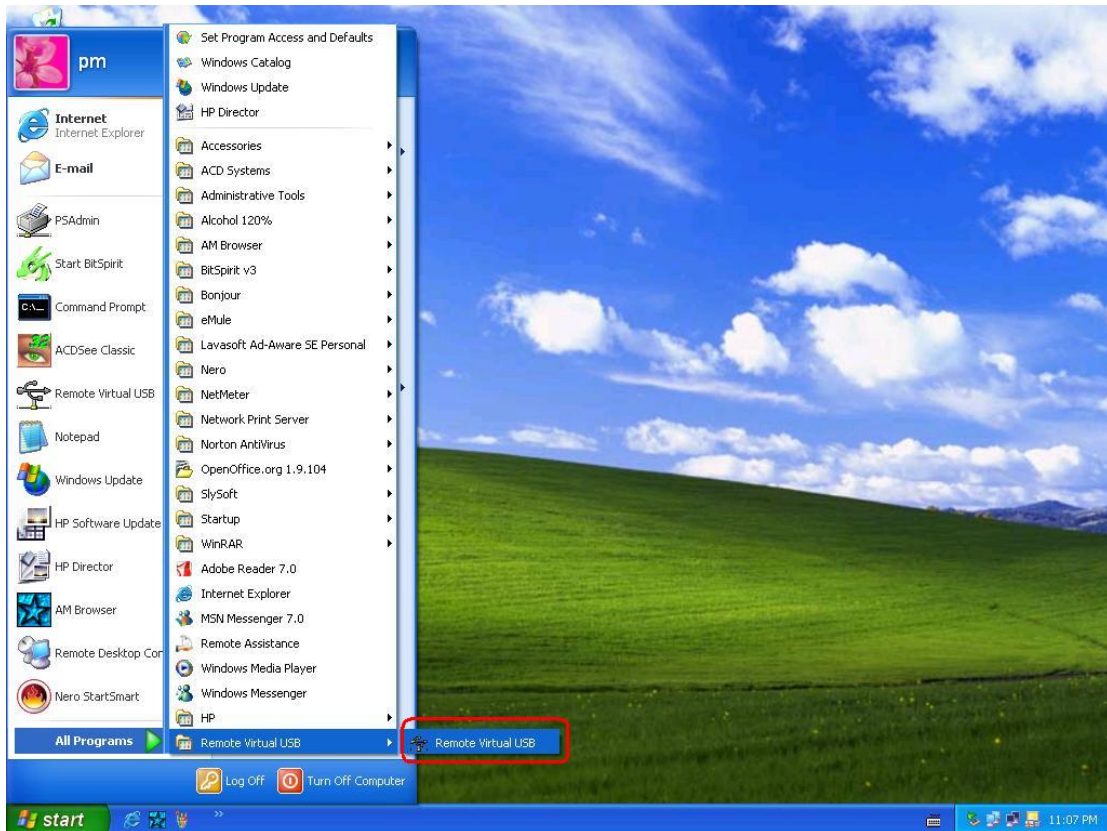
11. Click **Continue Anyway**.



12. Click **Finish** to complete the software installation.



13. Then, start to setup MFP server. Click **start -> All Programs -> Remote Virtual USB** folder; click **Remote Virtual USB** to launch MFP server utility.

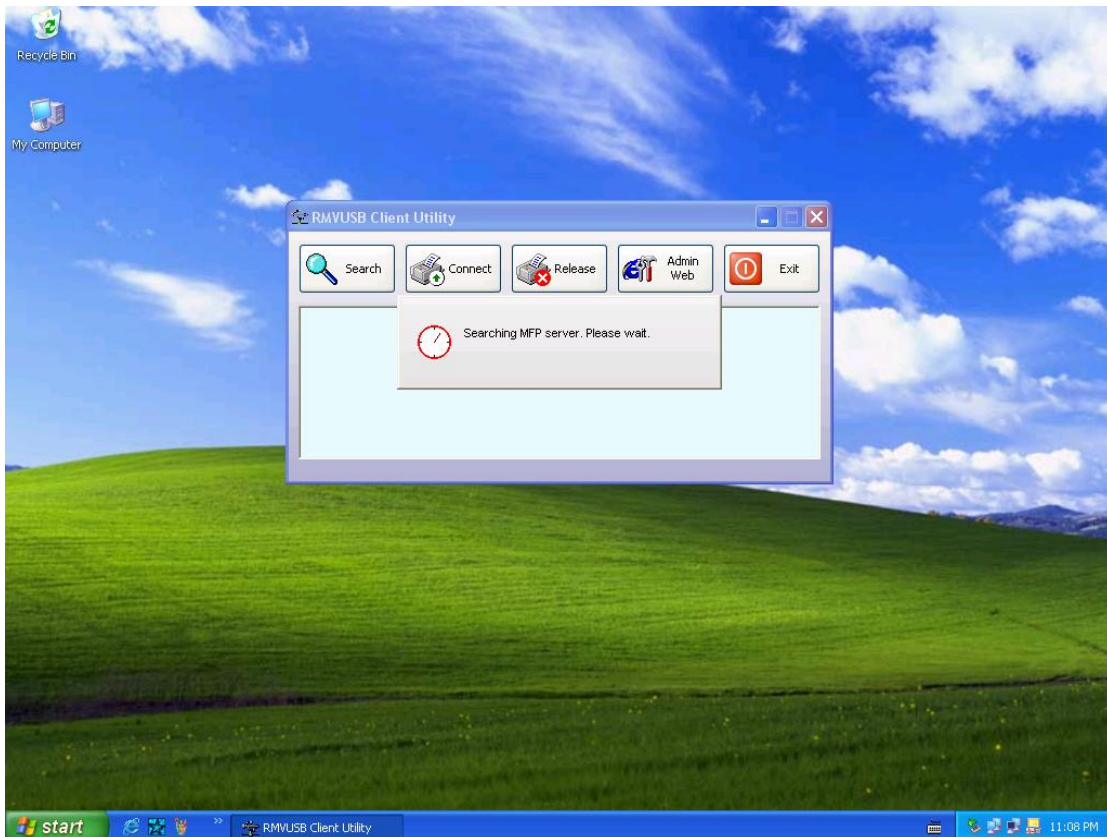


14. If you have Windows XP and the Windows Firewall is enabled you will see this

window pop-up message when the MFP server utility is first launched. Make sure you click the **unblock** button to allow communication with the MFP server. Other software firewalls may display similar options – make sure the MFP server software is allowed to bypass such programs.



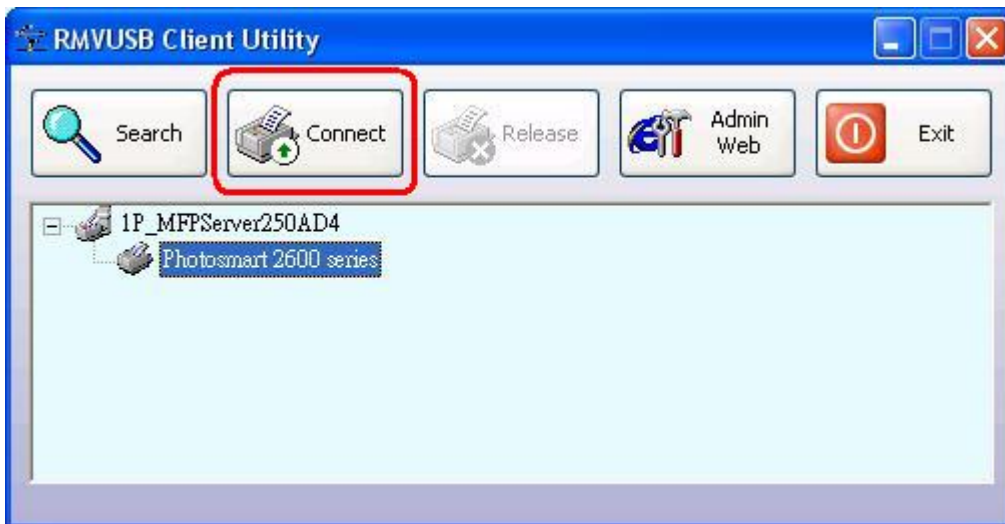
15. The MFP server utility will search your network for the MFP server and display it in the window. If no MFP server is found, please make sure any third party firewalls have been disabled or bypassed and click the **Search** button to try again.



Note:

The default IP address of MFP server is 192.168.0.10, and subnet mask is 255.255.255.0. If the MFP server utility didn't find MFP server, please make sure of the MFP server and your computer's IP segment are the same, e.g. 192.168.0.xxx.

16. Click the "+" in front of the MFP server name to show the name of the attached printer. Then select the printer name and click the **Connect** button in the MFP server utility.



17. The printer should be detected as if it was plugged directly into the computer. Finish any remaining setup needed by the printer software. Your MFP printer should be ready to use.



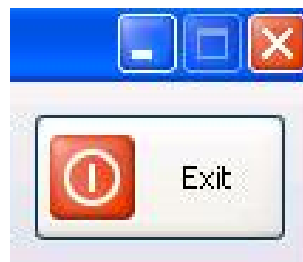
18. If you would like the connection to this printer to be restored automatically when the MFP server utility launches, you will need to add the device to your favorites list. Click the "+" in front of **Connected devices** and right-click the name of the printer. Choose **Add to favorites** from the menu that pop-up menu.



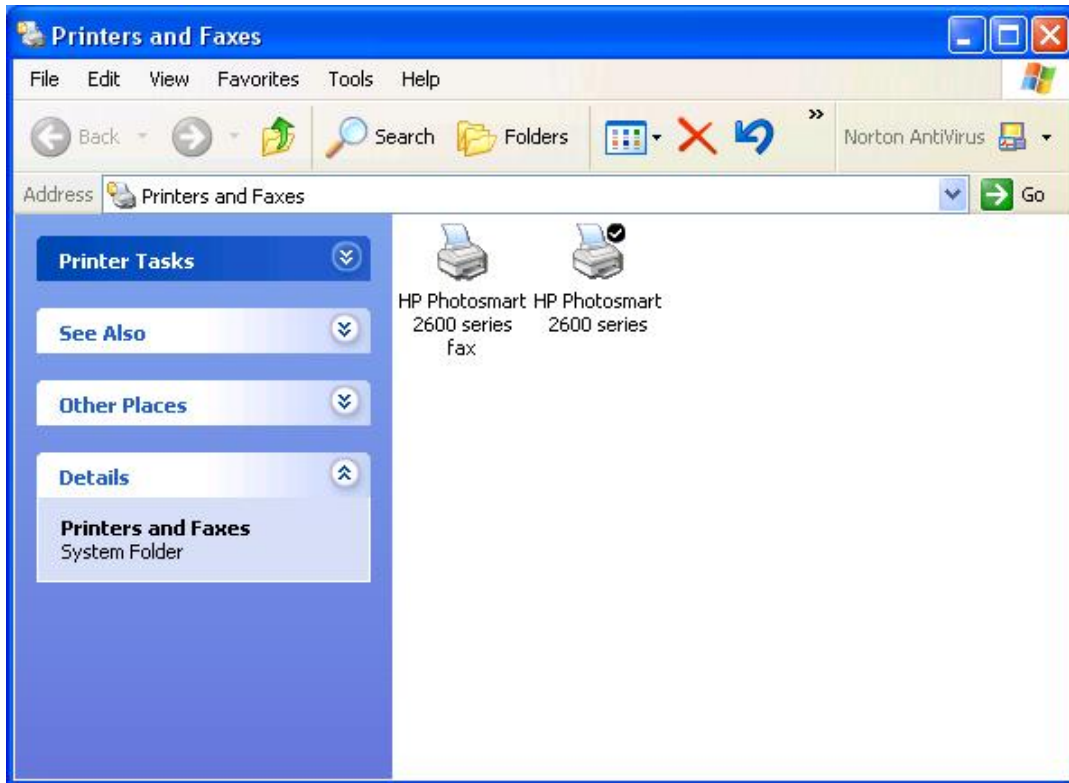
19. Click **OK** to confirm that the printer is in your favorites list.



20. Once you have connected to the MFP server you can close the MFP server utility. Be sure to use the close box with an **X** in the top right corner so that the MFP server utility continues to run in the background. The large button labeled **Exit** will shut down the MFP server utility and disconnect your computer from the printer.



21. From Windows 2000/XP system, go to **start -> Printers and Faxes** and make sure of the icon of MFP printer appeared.



22. Congratulations! Your MFP printer is now ready to share.

Note:

If you wish to setup more MFP servers, start MFP server utility from your Windows Start menu: **start -> All Programs -> Remote Virtual USB -> Remote Virtual USB** and repeat the setup procedure.

All contents are subject to change without prior notice.

