

Analog Video up to 2048 x 1536
QuickSwitch button for easy switching by a mere flip!
Switching Software Client for Windows & Mac included!!
Software Hotkeys & Universal Hotkeys both available!!!
2 x USB 2.0 Hub Ports for keyboard, mouse or high-speed USB devices!!!!

UKS8202-U2C 2-port USB Cable KVM w/ Audio&Mic

1 x QuickSwitch button for wired remote control
 2 x Fixed KVM Audio/Mic Combo Cables

Quick Installation Guide

Thank you for purchasing the **UKS8202-U2C USB Cable KVM Switch!** With our highly reliable and quality product, user can enjoy countless benefits from using it.



UKS8202-U2C

Introduction

The **UKS8202-U2C** is a 2-port **USB Cable KVM Switch** with 2 x fixed KVM cables and 1 x QuickSwitch button for wired remote control. It also provides *Audio and Microphone switching* function for uninterrupted multimedia experience. It allows you to access, control, boot and reboot multiple *multimedia* computers using only one USB keyboard, mouse, monitor and a speaker set and microphone.

For computers running Windows/Mac operating systems, it also provides an innovative and easy-to-use *KVM Switcher Software* - small Windows/Mac client application to facilitate your KVM switching operations such as computer selection and hotkey

sequence programming, autoscanning, autoscans delay time programming, independent/simultaneous audio & computer Switching, etc.

The **UKS8202-U2C USB Cable KVM Switch** offers USB 2.0 interface technology for Plug-and-Play and hot-pluggability. In addition to connect to mouse or keyboard, those two USB 2.0 ports can also be connected to other high-speed USB devices. Users can enjoy maximum flexibility and convenience with its compact and one-piece design.

Out-of-Box Installation

Take the Support CDROM and the Cable KVM Switch out of the box and follow the steps below for installation....

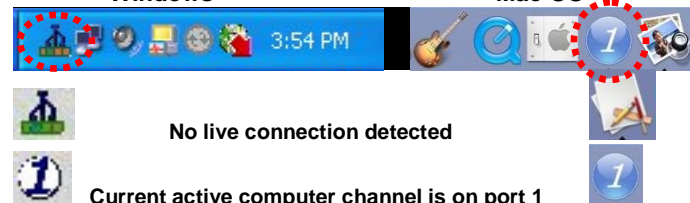
Step 1. Insert the Support CD ROM into your CD drive, and The installation interface will pop up (If the Autorun feature has not been enabled on your computer. Just find the Autorun.exe on the CDROM and double-click it to start.)

Step 2-1. For Windows/Mac: Just click the "Software Installation for Window" to start Windows switcher software installation. To install Mac version, please copy the file (*.pkg format) to the local hard disk and install it from there. Follow the instructions to completion. If the installation is complete, you will see a KVM Switcher icon on the system tray of your desktop. Right-click to evoke the operation menu and double-click to evoke configuration box. For operation details of the KVM Switcher software, please refer to the following sections.



Windows

Mac OS



Current active computer channel is on port 1



Current active computer channel is on port 2



The Mac version of the KVM switcher software supports only Mac OS 10.4 (Tiger) and later. Earlier version of the Mac OS might or might not work well with it.



The KVM Switcher Software supports both the Windows and the Mac OS operating systems. For other OS platforms such as Linux, you can still use the universal keyboard hotkey - *ScrLk + ScrLK* - to switch computer. However, this switching hotkey is not available on non-computer platform such as Mac OS.

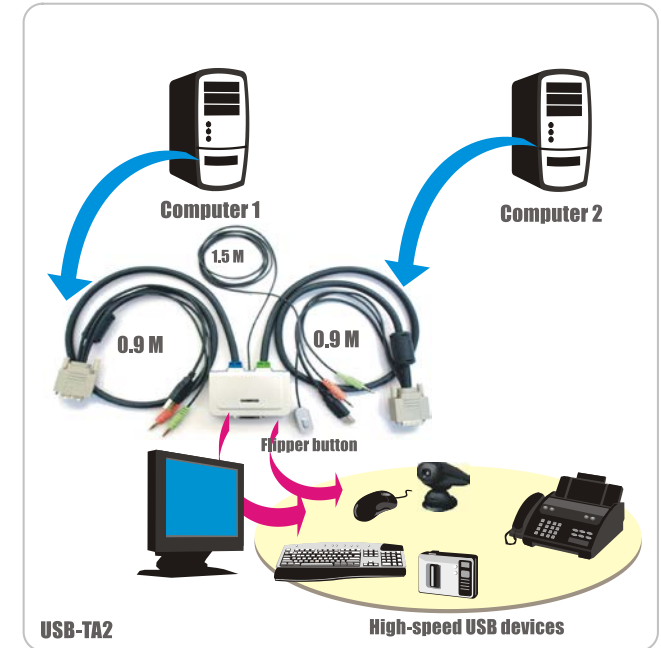
Step 3. Connect a set of the fixed KVM/Audio&Mic cables to a computer's connectors. Connect another set of cables to another computer. Now you can operate the KVM Switch immediately.



Some older computers with USB interface might need to manually enable the USB option in the BIOS settings before you can use any USB devices. If your USB interface does not work, please check the USB option status in the BIOS.



If you have not yet installed a USB mouse on your computer, there might be an error message telling you that mouse is not detected and prompting you to decide whether to ignore the same message in the future, and yet you found there is no mouse movement to disable this message....So it is suggested that you should install your USB mouse on your computer first, before connecting it to this KVM Switch.




Ways for KVM Switch Operation

There are three methods to control your KVM Switch for computer and Audio/Mic channel selection: using (1) the QuickSwitch Button (a wired remote control), (2) a hotkey sequence or (3) the KVM Switcher Software.

QuickSwitch button (a wired remote control)

The QuickSwitch button is a wired remote control that allows you a direct switching control. Simply press the button to toggle between the two computers.

 You can use the QuickSwitch button to switch to an empty port that is not connected with any computer. Normally, if you use keyboard hotkey or the KVM Switcher software, you will not be able to switch to an empty port (and audio/mic channel, if binding is enabled). By default, PC port switching and audio/mic port switching are bound together, unless you specify the audio to be fixed a specific port.


Keyboard hotkeys

User-definable hotkeys for computer selection:

Hotkey sequence = Ctrl + Alt + [command key]*


* Please refer to next section for keys that are qualified to be used as a command key


Universal hotkey for computer toggle-switching:
ScrLk + ScrLk


 Both the universal hotkey, ScrLk + ScrLk and the user-definable hotkey, Ctrl + Alt + [command key] **WILL NOT** allow you to switch to an empty port that is not connected with any computer. To force your KVM to switch to an empty port, just press the QuickSwitch button to switch.

Universal Hotkey sequence = ScrLk + ScrLk

* For other operating systems on computer such as Linux, you can still use this special hotkey to facilitate computer switching. This special hotkey is not available for Mac. HOWEVER, you can press QuickSwitch button to switch in any case.

 Each keystroke within a hotkey sequence should be pressed within 2 seconds. Otherwise, the hotkey sequence will not be validated.

 After port switching, you have to wait till the KVM Switch icon shows forth the target port before you can perform next switching again. The KVM Switcher icon could be found on the system tray/task bar of your Windows/ Mac OS desktop after its installation.

 All the hotkeys are only functional after your computers are booting into the OS. If you want to switch computer in the BIOS/preboot stage, press the QuickSwitch button to switch.

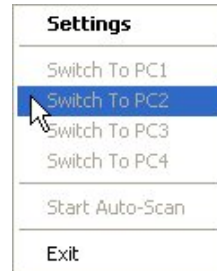
KVM Switcher Software (Windows & Mac platform)

In addition to computer switching, the KVM Switcher Software also allows you more advanced functions such as described in the next section....

KVM Switcher Operation Reference

Switch to Computer x by Operation Menu

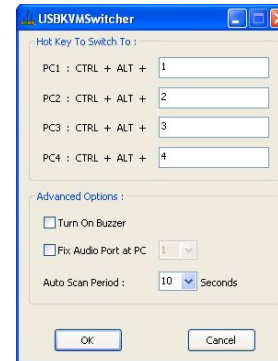
Right-click the KVM Switcher icon to evoke the operation menu, then select whichever computer that is available for switching. Once you select a computer channel, it will immediately switch to that computer. Note that the unconnected port(s) or the active port will be grayed-out and non-selectable.



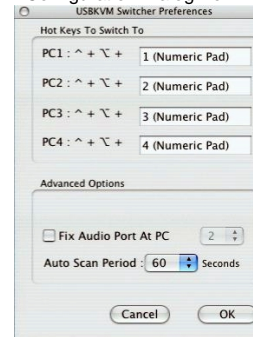
Windows : Operation Menu




Mac OS: Operation Menu



Configuration Dialog Box



Configuration Dialog Box

 The Mac version of KVM switcher user: if you want the KVM switcher open at login or kept in Doc, just select the option in the Operation Menu accordingly.

Switch to computer x by Keyboard Hotkeys

Hit the hotkey according to your current hotkey definition:

Hotkey sequence = Ctrl + Alt + [command key]*

* The factory default hotkey setting is Ctrl + Alt + 1/2/3/4 for computer 1/2/3/4. You can also use ScrLk + ScrLk to switch COMPUTER.

Start Auto-scan

Right-click the KVM Switcher icon to evoke the operation menu, then select *Start Auto-Scan* to activate autoscanning.

Stop Auto-scan

(While autoscanning) right-click the KVM Switcher icon to evoke the operation menu, then select *Stop Auto-Scan* to deactivate autoscanning.

KVM Switcher configuration


Right-click the KVM Switcher icon and select *Settings* or double-click the icon to bring up the configuration dialog box.

Define Hotkey commands

You can specify the command key as you like by typing it in. For example, you can specify the hotkey for switching to COMPUTER 1 as CTRL + ALT + A by typing an A (not case-sensitive) in the editable field.

Hotkey = Ctrl+ Alt + [Command key]*

* The command key is user-definable via the configuration dialog box

 Except those control keys such as Alt, Ctrl, Shift, CAPS, Tab, Esc and those functions keys and edit keys, all other keys on the keyboard, including those number keys on the number pad are all qualified to be used a hotkey command key. In addition to the software KVM Switching by the operation menu and the user-defined hotkeys, you can always use the universal hotkey for COMPUTER switching – ScrLk + ScrLk

Fix Audio Port at Computer x

Check this option and then select the computer to fix the audio/mic channel to the selected computer. Once this option is checked, the audio/mic channel will be fixed and become non-switchable.

Auto Scan Period

Select the Autoscan period from 10 ~ 60 seconds with an increment of 5 seconds. The Autoscan period is the time your KVM Switch will wait to switch to next computer.