



Ethernet over VDSL2

4-Port Managed Access Multiplexer

UVE7314-M User Manual

Rev. 1.1



Copyright EUSSO Technologies, Inc. All rights reserve

Copyright by EUSSO Technologies, Inc., All right reserved.

The information in this document has been carefully checked and is believed to be correct as of the date of publication. EUSSO Technologies, Inc. reserves the right to make changes in the product or specification, or both, presented in this publication at any time without notice. EUSSO assumes no responsibility or liability arising from the specification listed herein. EUSSO makes no representations that the use of its products in the manner described in this publication will not infringe on existing or future patents, trademark, copyright, or rights of third parties. Implication or other under any patent or patent rights of EUSSO Technologies, Inc. grants no license.

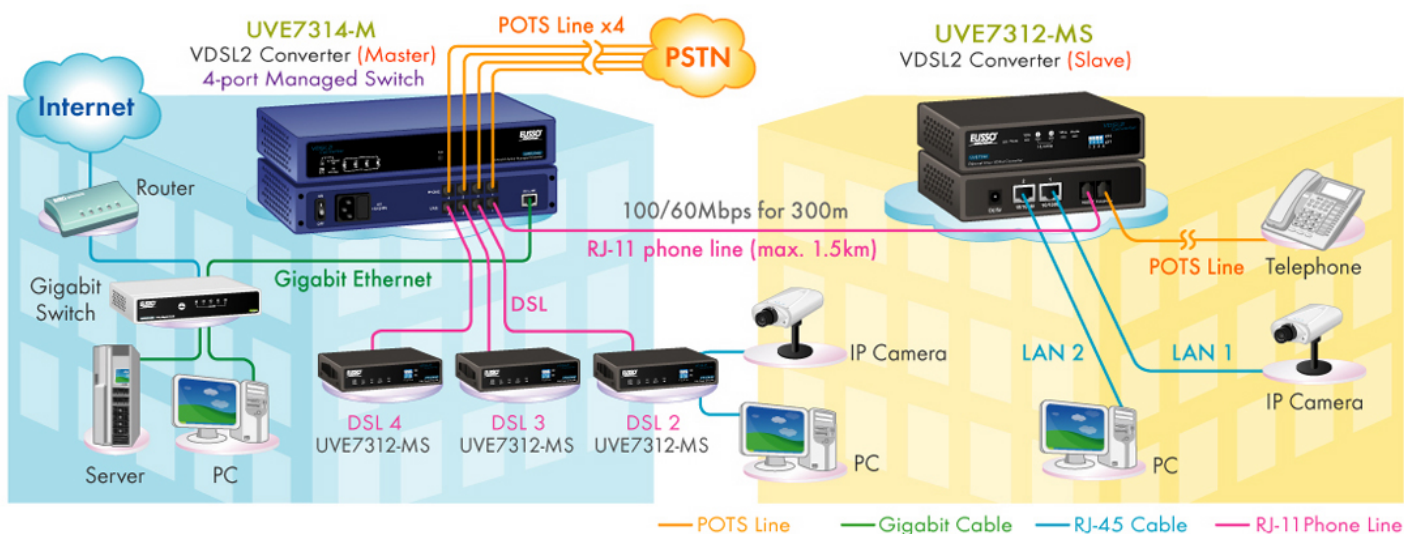
All other trademarks and registered trademarks are the property of their respective holders.

Quick Installation Guide

Step 1: Broadband Router Connections for UVE7314-M

- A. Connect UVE7314-M Giga Ethernet port to Broadband Router as the following connection.
- B. Connect Notebook PC LAN port to Broadband Router LAN port.
- C. Connect UVE7314-M RJ11 PHONE port to a Telephone Set or POTS Line.
- D. Connect AC Power. Switch power on, the POWER LED will be **Green ON**.
- E. The UVE7314-M will start downloading and testing. In **20 seconds**, the DSL LED indicators will start flashing 3 times and be ready for configurations.

Figure A. UVE7314-M Connections with Broadband Router & PSTN



Step 2: Settings for UVE7314-M from PC Web Browser

A. UVE7314-M address is default at **192.168.168.168**. Make sure the Notebook PC LAN port is within the same network and with IP address, e.g. 192.168.168.167, and Netmask of 255.255.255.0.

B. Enter the IP address **192.168.168.168** from PC Web browser for configuration settings.

Example: Enter <http://192.168.168.168> from IE Web browser.

The login page will be displayed as following.

C. Enter the user name and password into the blank field. The default settings are

Username: **admin**

Password: **@admin@**

Click the “**OK**” button to enter for configurations.



D. The system status page will be displayed as follows.

E. Now UVE7314-M is ready for web configurations.

Status

- ▶ System Admin
 - ▶ IP Config
 - ▶ Password Setting
 - ▶ Upgrade Firmware
- ▶ VDSL Setting
 - ▶ MIB Monitor
 - ▶ Port Status
 - ▶ Port Setting
- ▶ L2 Setting
 - ▶ VLAN Setting

Model Name	:
Software Version	: 1.4.0-122407-110146
WUI Version	: 1.4.1-Beta-030508-185726
MAC Address	: C8:08:08:01:38:00

Contents

1. Introduction.....	5
2. Features	6
3. Specifications	7
4. LED Indicators & Reset Button.....	8
5. Web-based Interface	9

1. Introduction

The **UVE7314-M** is a VDSL2 Access Multiplexer (DSLAM) with one Gigabit Ethernet port (RJ-45 connector) and four VDSL ports (RJ-11 connectors) + four POTS ports (RJ-11 connectors) with DSL splitters. The DSLAM (Digital Subscriber Line Access Multiplexer) is accommodating well proven Ethernet and VDSL technologies to extend Ethernet over single-pair phone line with VDSL signal. Up to 100/60 Mbps downlink/uplink bandwidth within 300m and 40/10 Mbps for 1km long range connections, it provides ultra-high performance to the pervasive telephone line network to quickly deploy a high-speed IP-based network for high-speed Internet access and video-on demand services, in addition to voice services.

The Gigabit Ethernet Uplink Port acts as the bridge to the Internet for end-users connected through the UVE7314-M VDSL ports. UVE7314-M also features build-in POTS/ISDN splitters which fits most popular standards worldwide so that the VDSL service can share the existing phone line with the end-users' POTS/ISDN telephone line service, thus reducing cost and overall wiring requirements.

The UVE7314-M can be easily configured through web-based management interface. The intelligent web-based management allows for streamlined configuration of the UVE7314-M through a single IP address. The UVE7314-M can be configured on a per-link basis for transmission mode, rate limitations, and signal-to-noise (SNR) margin.

The UVE7314-M provides comprehensive hardware diagnostics and is easy to maintain. The UVE7314-M is designed to build in to a 1U rack- unit. The resulting compact, cost-effective form factor offers systems integrators, small business and building owners an attractive Long Reach Ethernet solution.

2. Features

- ◆ 4 full-duplex VDSL links via RJ-11 connectors
- ◆ 4 corresponding POTS/ISDN lines via RJ-11 connectors
- ◆ Build-in POTS/ISDN worldwide standard splitter for each VDSL port
- ◆ Gigabit Ethernet for uplink
- ◆ Flexible MIB configuration of network resources via web-base interface or command line interface
- ◆ Supports VDSL MIB RFC-3728 standard
- ◆ Supports VDSL MCM MIB RFC-4070 standard
- ◆ Selectable fast and interleaved mode
- ◆ Selectable target data rate and target SNR margin
- ◆ Supports whole system firmware upgrade through networks
- ◆ Compact 1U rack mount design
- ◆ Compliant with ETSI, ITU and ANSI standards

3. Specifications

- ◆ Board dimension: 208mm x 320 mm
- ◆ Power supply: 110/220 VAC
- ◆ Power consumption: 30 Watt maximum.
- ◆ Interface:
 - RJ-11 female Phone Jack
 - RJ-45 female Ethernet jack
- ◆ Up-Link Port: Full Gigabit Ethernet support with auto MDIX.
- ◆ Phone: Industry standard phone jack with on board surge protection.
- ◆ Splitter: Fit for most common standards (US, EU, Japan, or China)
- ◆ Standard: Full ITU-T G.993.1 (VDSL) and G.997.1 compatible.

4. LED Indicators & Reset Button

On the front panel of UVE7314-M , there are 12 LED indicators as the following

POWER: “**Green On**” indicates power is on and normal.

ACT: “**Green On**” indicates Up-Link Ethernet port is in connection.
“**Flashing**” indicates Up-Link Ethernet Port data activities.

1000M: “**Green On**” indicates Up-Link Ethernet port is in Gigabit connection.

100M: “**Green On**” indicates Up-Link Ethernet port is in 100M connection.

Port 1 Data: “**Green Flashing**” indicates port 1 data activity.

Port 1 Line: “**Green Flashing**” indicates DSL 1 is in handshaking.
“**Green ON**” indicates DSL 1 is in connection.

Port 2 Data: “**Green Flashing**” indicates port 2 data activity.

Port 2 Line: “**Green Flashing**” indicates DSL 2 is in handshaking.
“**Green ON**” indicates DSL 2 is in connection.

Port 3 Data: “**Green Flashing**” indicates port 3 data activity.

Port 3 Line: “**Green Flashing**” indicates DSL 3 is in handshaking.
“**Green ON**” indicates DSL 3 is in connection.

Port 4 Data: “**Green Flashing**” indicates port 4 data activity.

Port 4 Line: “**Green Flashing**” indicates DSL 4 is in handshaking.
“**Green ON**” indicates DSL 4 is in connection.

On the front panel of UVE7314-M, there is a reset button for factory default settings.

5. Web-based Interface

Use IE explore and type “<http://192.168.168.168>” (default setting IP address is 192.168.168.168) to access the web-based management. The default account name and password are “[admin](#)”, and “[@admin@](#)”.



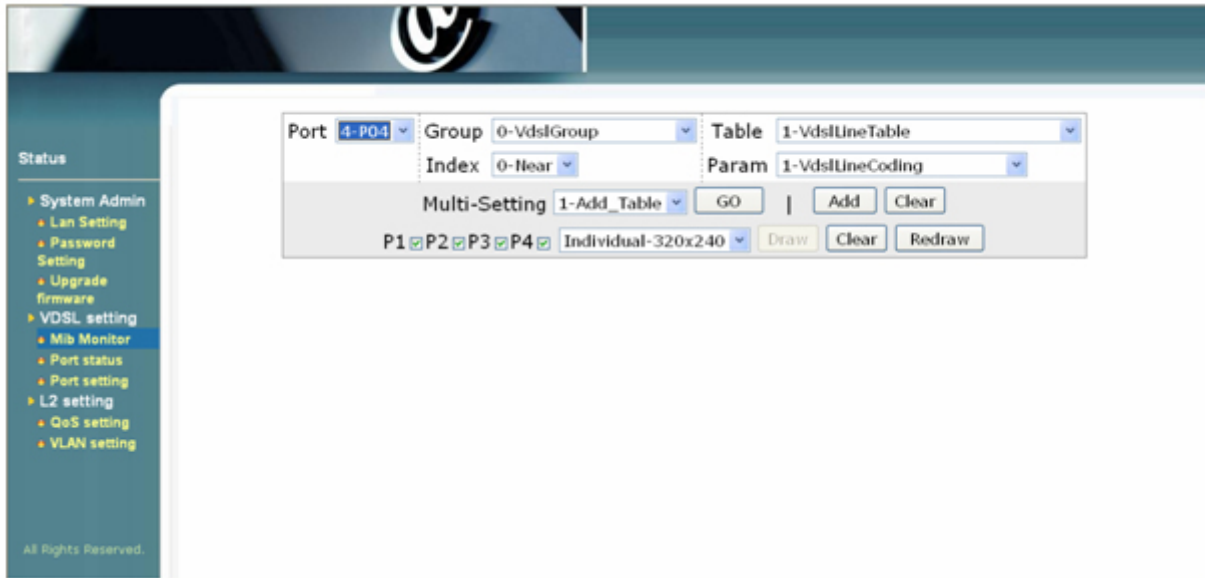
◆ LAN Setting

LAN setting can be changed manually by configuring the IP address settings in the blank space for the HOPE module



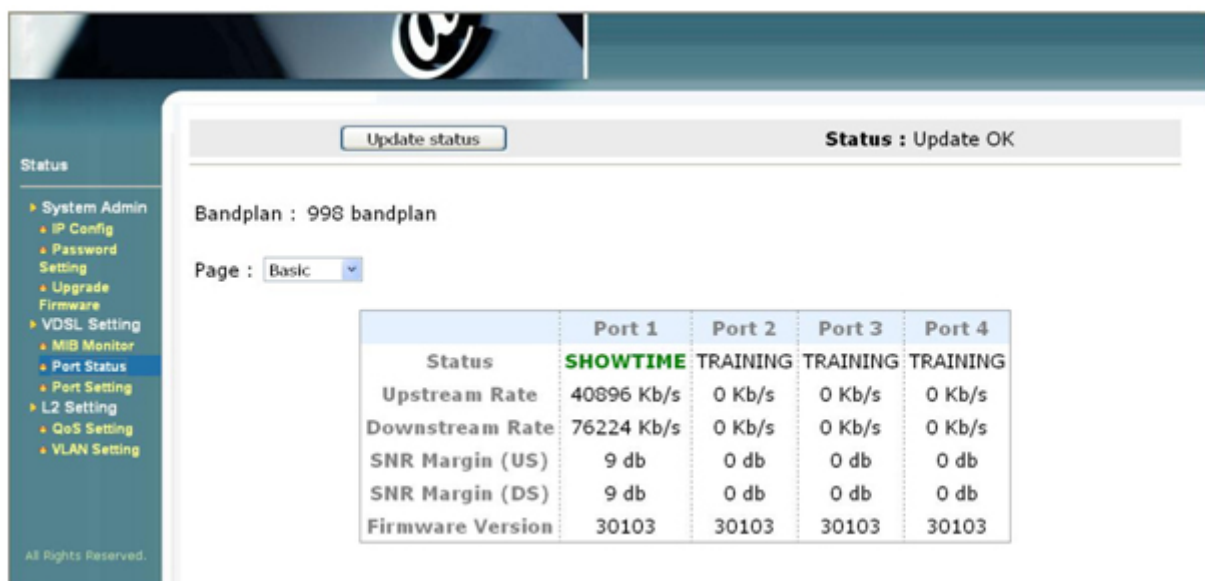
◆ **MIB Monitor**

MIB Monitor allows users to monitor all the useful MIB information, and can be plotted into a statistic diagram or table for engineering purposes. The MIB data is able to be collected every 15 minutes or daily by selection, and can be kept for 1 month.



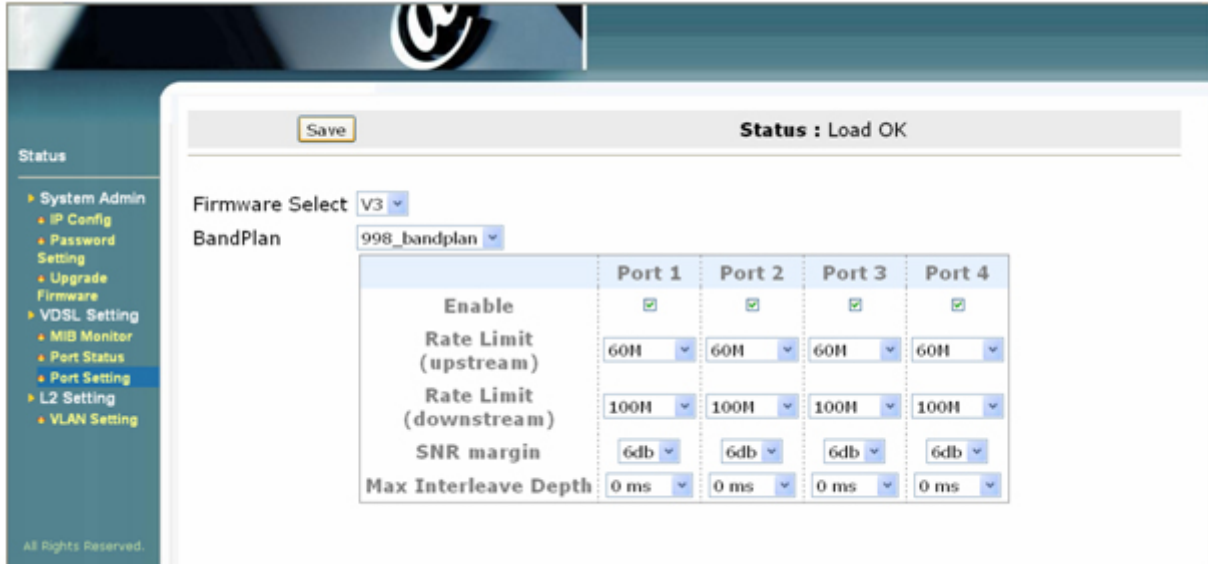
◆ **Port Status**

Port status shows the current connection status for each port, and all the port settings can be easily viewed with this status table.



◆ **Port Setting**

User can configure fast/interleave mode, downstream rate limit, upstream rate limit and SNR margin for each port in the port setting section.



◆ **VLAN Setting**

VLAN setting allows different VLAN mapping for each DSL port connection.

