



# Ethernet over VDSL2 Line Power Converter

UVE7312-MP & UVE7312-SP User Manual

Ver 1.02



Copyright EUSSO Technologies, Inc. All rights reserve

# Table of Content

1. Introductions.....	2
2. Application Notes .....	2
3. Features .....	3
4. Packing Contents .....	3
5. LED Indicators.....	4
6. Dip Switches Settings .....	4
7. Data Rates & Distances .....	5

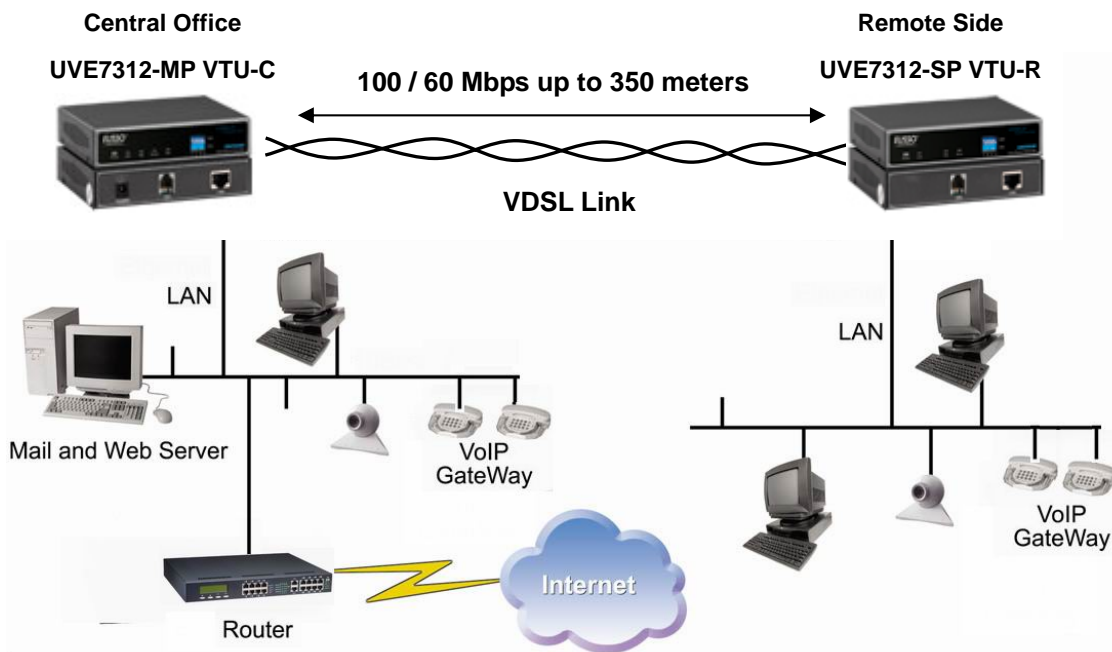
# 1. Introductions

The UVE7312-MP and UVE7312-SP, a line power pair of VDSL2 ( Very high-bit-rate Digital Subscriber Line ) LAN Extender, provides a broadband transmission up to 100 / 60Mbps of downstream / upstream data rate over single pair copper line for point-to-point Ethernet connectivity. With 100 / 60Mbps data rate, UVE7312-MP / UVE7312-SP supports transmission distance up to 350 meters for line power connection. The line power is supplied from the UVE7312-MP to UVE7312-SP and conforms to the Safety-Extra-Low-Voltage ( SELV ) standards.

With plug and play features and minimum installation time, UVE7312-MP is always configured as master mode for central side, and UVE7312-SP as slave mode for remote side. The UVE7312-MP / UVE7312-SP conforms to the ITU-T G.993.1 and G.993.2 to meet VDSL / VDSL2 and SG15Q4 DMT for network requirements. A pair of UVE7312-MP / UVE7312-SP offers a cost effective line power solution for bandwidth-hungry applications such as LAN-to-LAN connectivity, Video Streaming, FTTB, and MDU/MTU over single twisted pair telephone line.

## 2. Application Notes

### 1) Ethernet To Ethernet Bridge Extension



### 3. Features

- ITU-T G.993.1, G.993.2 VDSL/VDSL2 and SG15Q4 DMT Compliance
- 100 / 60 Mbps DownStream / UpStream for distance up to 350 meters
- Supports Line Powered VDSL2 connection
- Conforms Safety-Extra-Low-Voltage ( SELV ) standard
- RJ11 for DSL interfaces + RJ45 for Ethernet LAN port
- 5 LED Indicators for UVE7312-MP
- 4 LED indicators for UVE7312-SP
- 4 Dip Switches for Configuration Settings
- Trellis Coding support up to 1024 Discrete Multi-Tone ( DMT ) bins
- Auto MDIX for 10 / 100 BaseT Ethernet LAN Ports
- Low-Latency for Video / Voice / Data applications
- Line Surge Protection
- Selectable Fast and Interleaved modes
  - Fast mode guarantees a minimum end to end latency less than 1 ms.
  - Interleaved mode provides impulse noises protection for any impulse noise with a duration less than 250 us. Interleaved mode has a maximum end to end latency of 10 ms. Interleaved mode is the default mode.
- Selectable fixed data rate and fixed SNR margin
  - User may select fixed SNR margin ( 9 dB ) or fixed target data rate.
  - When fixed SNR margin is selected, the systems will maintain the SNR margin at 9 dB across all available loop length.
  - When fixed target data rate is selected, the system will lock the data rate at 50 / 20 Mbps whenever the calculated SNR margin is higher than 9 dB. This will result in the best system stability and is the default mode.

### 4. Packing Contents

Inside the package you should find:

- (1) One UVE7312-MP / UVE7312-SP VDSL2 LAN Extender ( Master / Slave )
- (2) One AC to DC Power Adaptor ( DC12V / 2.5A ) for UVE7312-MP
- (3) One User Manual CD

Please check if the packing is damaged or any component is missing. If so, please contact your distributor.

## 5. LED Indicators

On the front panel of UVE7312-MP / UVE7312-SP, there are five LED indicators as the following

**POWER:** “Green On” indicates power is on and normal.

**LAN:** “Green On” indicates Ethernet LAN port is in connection.  
“Flashing” indicates Ethernet LAN data activities.

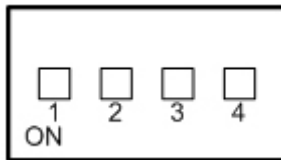
**DSL:** “Green On” indicates VDSL2 is in connection.  
“Flashing” indicates VDSL2 is in line handshaking.

**Master:** “Green On” indicates UVE7312-MP is always set as Master (VTU-C) mode.

**Slave:** “Green On” indicates UVE7312-SP is always set as Slave (VTU-R) mode.

**PM:** “Green On” indicates UVE7312-MP is providing line power to UVE7312-SP.  
“OFF” indicates UVE7312-MP line power is OFF.

## 6. Dip Switches Settings



	Pin 1	Pin 2	Pin 3	Pin 4
	VTU-C/R	Mode	Rate Limit	SNR
<b>OFF</b>	VTU-C	Interleaved	50/20 Mbps	9dB
<b>ON</b>	VTU-R	Fast	Full Rate	6dB



### Pin 1: VTU-C/R Switch

**VTU-C:** UVE7312-MP will always act as the Central Office ( CO ) side.

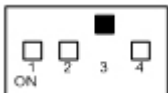
**VTU-R:** UVE7312-SP will always act as the Remote side.



**Pin 2: Mode for impulse noise protection**

**Interleave mode:** Protection for up to 250ms impulse noises with latency less than 6 ms.

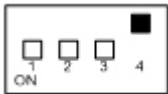
**Fast mode:** Direct data transmission with latency less than 1ms.



**Pin 3: Rate limit control**

**50/20 Mbps:** Line rate limited to 50/20 Mbps.

**Full Rate:** Provides up to 100Mbps/60Mbps line rate in short line.



**Pin 4: Signal to Noise Ratio (SNR)**

**9dB:** Higher SNR margin (9dB) will result in less error with more stable VDSL2 link.

**6dB:** Original and Normal channel noise protection with 6 dB SNR.

## 7. Data Rates & Distances

**Performance in AWG 26 Line at 6dB with full rate**

Down Stream Data Rate (Mbps)	Up Stream Data Rate (Mbps)	Distance (feet)
100	60	500
98	53	1000
90	44	1250