

Introduction

The device is a powerful, high-performance Fast Ethernet switch, with all 24 ports capable of 10 or 100Mbps auto-negotiation operation (NWay), which means the switch could automatically negotiate with the connected partners on the network speed and duplex mode. It is ideal for micro-segmenting large networks into smaller, connected subnets for improved performance, enabling the bandwidth demanding multimedia and imaging applications. Moreover, the 10/100Mbps auto-sensing ability provides an easy way to migrate 10Mbps to 100Mbps network with no pain. Compared to the shared 10Mbps or 100Mbps networks, the switch delivers a dedicated 10/100Mbps connection to every attached client with no bandwidth congestion issue. This switch also supports auto MDI / MDI-X function. Each port could be used to connect to another switch or hub with no crossover RJ-45 cable.

Store-and-forward switching mode promises the low latency plus eliminates all the network errors, including runt and CRC error packets. To work under full-duplex mode, transmission and reception of the frames can occur simultaneously without causing collisions as well as double the network bandwidth.

The switch is plug-n-play without any software to configure and also fully compliant with all kinds of network protocols. Moreover, the rich diagnostic LEDs on the front-panel can provide the operating status of individual port and whole system.

Before you start to install the switch, check the following contents in this package :

- One NWay switch
- One Power cord
- User's manual
- Rack-mount brackets and screws

LED Definition

Please refer to the following table for LED definition



10.5-inch Model



19-inch Model

| LED | Status | Operation |
|----------|----------------|--|
| Power | Steady Green | Power is on |
| | Off | Power is off |
| Link/Act | Steady Green | The port is connected |
| | Blinking Green | The port is transmitting/receiving data. |
| | Off | No connection |

REAR Panel

The rear panel is shown as below,



10.5-inch Model

Stations Connection

Connect each station to the switch by twisted-pair cable. Plug one RJ-45 connector into a RJ-45 port of the switch, and plug the other RJ-45 connector into the station's network adapter. Power on the switch and then system is ready.

For cable selection, refer to the following table.

Switches Connection

In making a switch interconnection, you could use any port to connect another switch with straight or crossover cable. As all the ports support auto MDI / MDI-X function, using a straight cable to make a switch-to-switch connection is allowed.

For cable selection, refer to the following table :

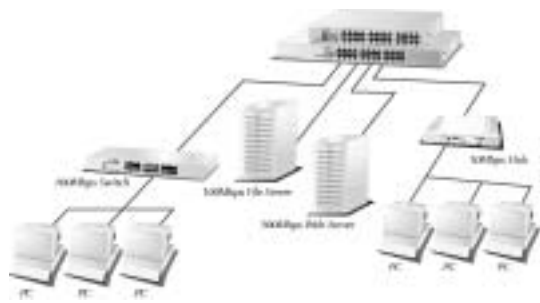
| Network Speed | Cable Type | Max. Length |
|---------------|----------------------|-------------|
| 10Mbps | Cat. 3, 4, 5 UTP/STP | 100 meters |
| 100Mbps | Cat. 5 UTP/STP | 100 meters |

Rack-Mount

Rack-Mount Installation (Rack-mount kit is optional for 13-inch model)

The switch may standalone, or may be mounted in a standard 19-inch equipment rack. Rack mounting produces an orderly installation when you have a number of related network devices. The switch is supplied with two optional rack mounting brackets and screws. These are used for rack mounting the unit.

Network Application



Specification

| | |
|-----------------|---|
| Standard | IEEE 802.3 10BASE-T IEEE 802.3u 100BASE-TX IEEE 802.3x full duplex operation and flow control |
| Interface | 24 * 10/100Mbps RJ-45 Fast Ethernet Ports |
| Uplink | Auto MDI/MDI-X (Auto crossover) |
| Network Speed | 10/100Mbps & Full/Half duplex mode auto detection |
| MAC Addr. Table | 8K MAC entries |
| Memory | 320Kbytes |
| Power Supply | Internal Power supply 3.3V 4A (100-240V/ 50-60Hz) |
| EMI | CE and FCC class A |

61NB-5124E-200/C

FCC Certifications



This Equipment has been tested and found to comply with the limits for a Class A digital device, pursuant to part 15 of the FCC Rules. These limits are designed to provide reasonable protection against harmful interference when the equipment is operated in a commercial environment. This equipment generates, uses, and can radiate radio frequency energy and, if not installed and used in accordance with the instruction manual, may cause harmful interference to radio communications.

Operation of this equipment in a residential area is likely to cause harmful interference in which case the user will be required to correct the interference at his own expense.

This device complies with Part 15 of the FCC Rules. Operation is subject to the following two conditions: (1) this device may not cause harmful interference, and (2) this device must accept any interference received; including interference that may cause undesired operation.

CE Mark Warning



This equipment complies with the requirements relating to electromagnetic compatibility, EN 55022 class A for ITE, the essential protection requirement of Council Directive 89/336/EEC on the approximation of the laws of the Member States relating to electromagnetic compatibility.

Company has an on-going policy of upgrading its products and it may be possible that information in this document is not up-to-date. Please check with your local distributors for the latest information. No part of this document can be copied or reproduced in any form without written consent from the company.

Trademarks:

All trade names and trademarks are the properties of their respective companies.

Copyright © 2003, All Rights Reserved.

Document Version: 2.0