



## USS4500-I

### Gigabit Network IDE Storage Server

Quickly Add 3.5" IDE Hard Drive Up to 500GB to Your Network



#### FEATURES

- Supports 3.5" IDE Hard Drive (ATA133) up to 500GB
- Integrated Express Gigabit LAN Port for Throughput Up to 2000Mbps
- Supports two standard USB2.0/1.1 Ports
- No Direct Connection to a Computer Necessary
- Supports Unicode for Multiple-Language Characters
- Supports Firmware Update Over The Graphic User Interface (UGI)
- Built-in Samba server, FTP Server, and WEB Server
- 50 password-protected account for authorized users
- Ideal for Sharing Digital Photos, Movies, Music, or Other Files
- Supports Fixed IP and DHCP Clients Network
- Compatible with Windows 95/98/98SE/ME/XP/2000 /NT4.0/Linux/MAC OS
- Supports CIFS/SMB for Microsoft Network
- Supports Accessing Management for 100 Folders
- Supports uPNP, Sntp for Time Zone
- Provides PNMD for User-Friendly Setup

#### Package Contents

- One Gigabit Network IDE Storage Server
- One Setup Utility / Manual CD-ROM
- One Quick Installation Guide
- Four HDD Fastening Screw
- One Power Adapter and One AC Power Cable

#### OVERVIEW

The USS4500-I is a high-speed, economical, flexible, and powerful solution to add up to 500GB of NAS (Network Attached Storage) onto your network, especially suitable for small business, SOHO or personal data sharing requirement. Installing of USS4500-I SOHO NAS is simple---just plug it directly into your network, and it's instantly available for use. The device supports Gigabit high-speed Ethernet transmitting rate and EXT3 file format to make efficient for store and share your music, video, images (photos) or other data files with managed access by user names or group from your network.

It also provides a multiple data sharing way with supporting FTP and WEB server and allows users in a LAN to easily backup data or share files through Intranet/Internet. For flexibility and utility of usage, USS4500-I can be set up to be accessible directly from Internet to upload or download file either via web browser or by FTP. Files can be available publicly, or create 50 password-protected accounts for authorized users. If you enable the SWAP function for the device, the system allowed the maximum 32 concurrently connected users to access this storage device.

With Unicode supported, USS4500-I is compatible to multilingual file name. Along with the embedded two USB ports that give a convenient connection for USB printer, Flash Disk, or USB storage usage, the USS4500-I SOHO NAS leads you to an unobstructed network.

USS4500-I is portable and removable external GigaFast Ethernet hard disk device. Connect one directly to a PC as additional personal storage space or add it to your network so that everyone on the network can access this storage device

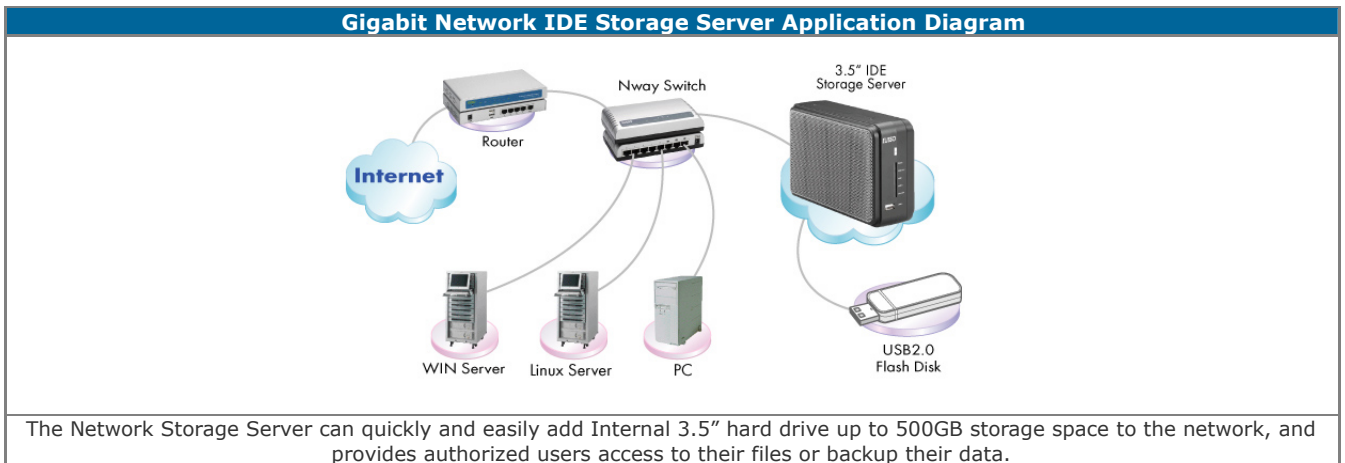
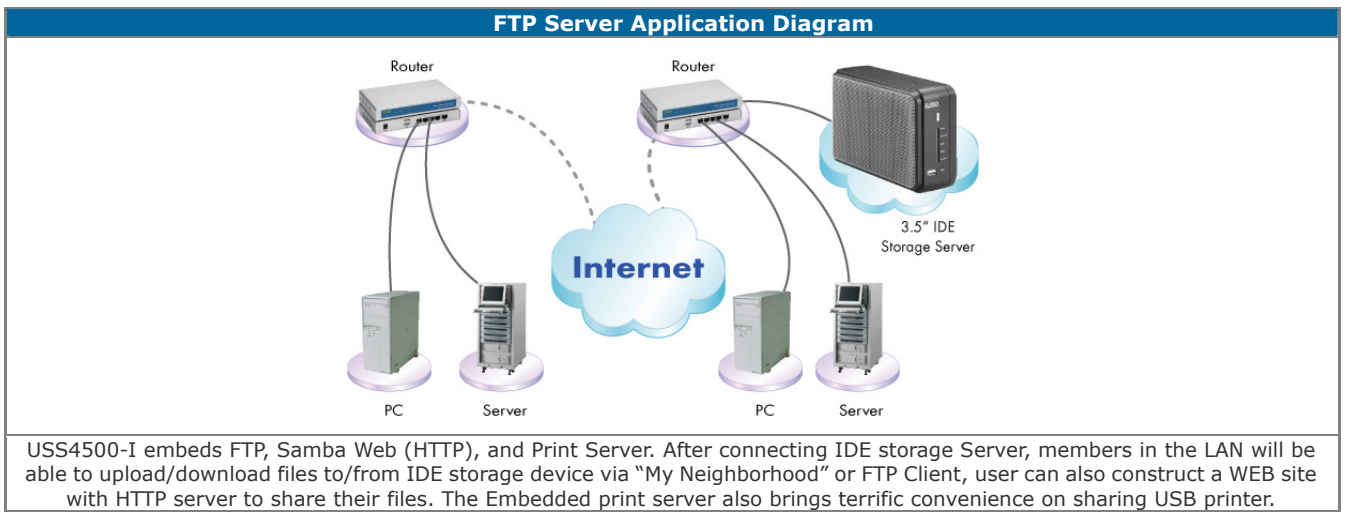
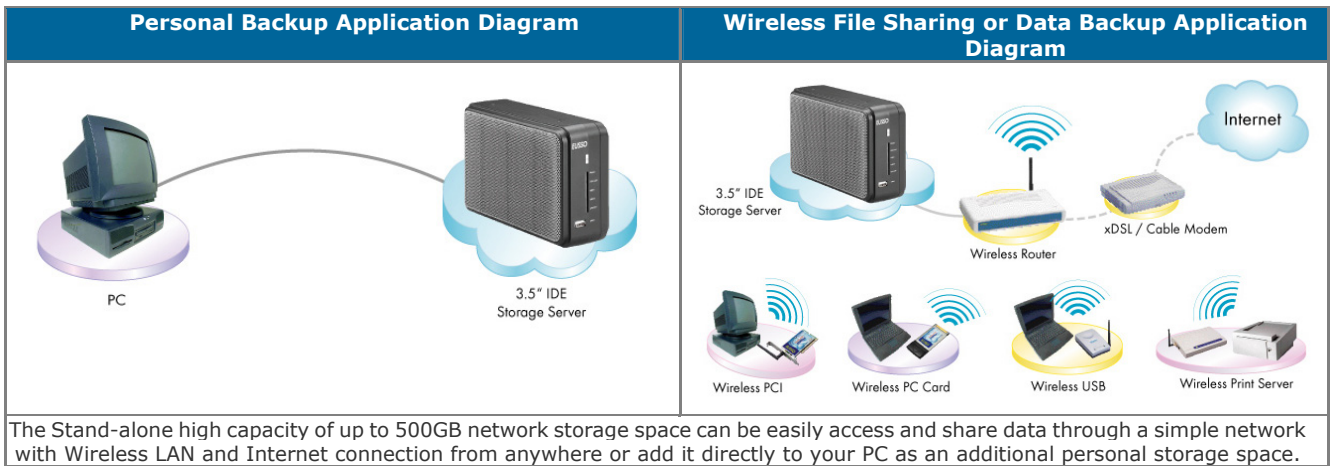
**SPECIFICATIONS**

System Specifications	
Host Interface	2 * USB2.0/1.1 Ports 1 * RJ-45 10/100/1000Mbps Gigabit LAN Port
Buttons	Power, Reset
USB Connection Speed	USB2.0 ( Max. 480Mbps ) USB1.1 ( Max. 12Mbps )
Network Connection Speed	IEEE802.3ab:1000/2000Mbps IEEE802.3u: 100/200Mbps IEEE802.3: 10/20Mbps
Support Hard Drive	Standard 3.5" IDE Hard Drive ( ATA100/133) Standard USB2.0/1.1 External Hard Drive
Cabling Type	Category 5 Ethernet Cable or Better
Diagnostic LEDs	Power: ( Green ) HDD ACT: Amber USB I: Link ( Green ) USB II: Link ( Green ) Link/Act: 1000Mbps Link/Act ( Green ) 100Mbps Link/Act ( Amber )
Power Supply	DC 12V/3A External Power Adapter
Dimension	220(L) x 132(W) x 60(H) mm
Weight	790 g
EMI Certifications	FCC Class A, CE Class A, VCCI Class A

System Specifications	
Protocol	TCP/IP HTTP SMB FTP USB2.0/1.1 uPnP
USB Drive Format	EXT2, EXT3 FAT16, FAT32
Integrated File Server	FTP Server Samba Server Web (HTTP) Server Print Server
Advanced Feature	50 Password-Protected User Accounts 32 Concurrent Connection with SWAP Enable Three Pre-Defined User Authority Levels Fixed IP and DHCP Clients Supports Unicode for Multiple Language Auto-Detection for Newly Install USB Device
Management	User Account Management Folder and Drive Management Backup Function Group Access Management Firmware Upgrade
Hardware	Power: On/Off Reset Button: Reset, Load Factory Default LEDs: Power, HDD Act, USB I, USB II, Link/Act

Environment	
Operating Temperature	0°C to 55°C (32°F to 131°F)
Storage Temperature	-20°C to 70°C (-4°F to 158°F)
Operating Humidity	10% to 95% Non-Condensing
Storage Humidity	0% to 95% Non-Condensing

**Application Diagram**



**ORDERING INFORMATIONS**

Model	Description
USS4500-I	10/100/1000M Network Storage Server for 3.5" IDE Hard Drive

*EUSSO Technologies, Inc. is a dedicated data communication and networking company. With professional experiences in design, production, marketing and service support, we deliver the full range networking products including Gigabit Ethernet, Fiber Optic, Wireless LAN, Switches, Hubs, LAN cards, PCMCIA adapters, Converter, Transceivers. As well as Internet Telephony Gateway, Print Servers, Internet Sharing Servers and many others.*

2006/3/20 ver 1.0