

UGS5824-RW (v2)

24-Port Web Smart Gigabit Switch

Manage all Gigabit ports from Web Browser



FEATURES

- 24 x 10/100/1000Mbps RJ-45 Ethernet ports
- Complies with IEEE802.3, 802.3u, 802.3ab, 802.3x, 802.1Q, 802.3p standard
- User friendly Web-based management and Auto-discovery utility
- Supports local RS-232 console port or Web-based UI for configuration
- Supports Port Trunking up to 8 ports and 8 group port aggregation
- 8K MAC address entries and 24 groups VLAN table
- Supports advanced Quality of Service (QoS) for better communication quality
- All ports support auto MDI/MDI-X cable detection
- Advanced Store-and-Forward package switching that optimizes data transfers
- Full-duplex 802.3x flow control and half duplex back-pressure
- Efficient MAC address learning engine supports up to 8K MAC addresses
- Integrated 400K bytes packet buffer memory and 9.6K bytes jumbo frame

PACKAGE CONTENTS

- One 24-port Gigabit Web Smart Switch
- One User's Manual
- One AC Power Cord
- One set of Rack-mount Bracket with Screws

OVERVIEW

The 24-port 10/100/1000Mbps Ethernet Web Smart Switch compare to the traditional 10/100Mbps Ethernet, the switch delivers a dedicated Gigabit connection to every attached client with no congestion issue. The gigabit ports also provide the fat pipe to the server or backbone connectivity for boosting the total system performance.

Out of the ordinary dumb switches, the 24-port Gigabit Web Smart Switch embedded advanced management capability; that the device can be managed through console port or web-based UI. This is much useful for system manager to monitor and control the system efficiently. Store-and-forward switching mode promises the low latency plus eliminates all the network errors, including runt and CRC error packets. To work under full-duplex mode, transmission and reception of the frames can occur simultaneously without causing collisions as well as double the network bandwidth.

UGS5824-RW offers users with fast and reliable network connection. The store-and-forward architecture filters errors and forwards packets in a non-blocking environment. Flow control ensures the correctness of data transmitting. The 802.3x and backpressure flow control mechanisms work respectively for full and half duplex modes.

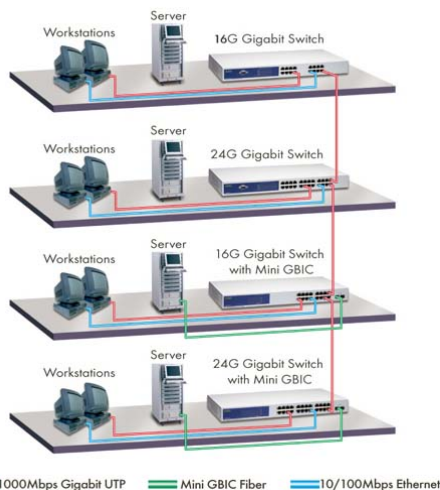
The switch is plug-n-play without any software to configure and also fully compliant with all kinds of network protocols. Moreover, the rich diagnostic LEDs on the front-panel provide the operating status of individual port and whole system.

SPECIFICATIONS

System Specifications	
Ethernet Standard	IEEE802.1p Traffic Prioritization IEEE802.1Q VLAN Interoperability IEEE802.3 10BASE-T IEEE802.3u 100BASE-TX IEEE802.3ab/z 1000BASE-T IEEE802.3x Full duplex operation and flow control
Interface	24 * 10/100/1000Mbps RJ-45 Gigabit Ethernet ports 1 * RS-232 console port
Uplink	Auto MDI/MDI-X (Auto Crossover)
Network Speed	10/100Mbps Full/Half duplex mode auto detection 1000Mbps Full-duplex only
Diagnostic LED	Power; Link/Act: 1000Mbps
MAC Address Entry	8K MAC entries
Memory	400K bytes buffer memory, 9.6K bytes jumbo frame
Filtering / Forwarding Rate	10Mbps: 14,880pps/14,880pps 100Mbps: 148,800pps/148,800pps 1000Mbps 1,488,100pps
Installation	19-inch Rack-Mount size
Operating Temperature	0° ~ 40°C (32° ~ 104°F)
Operation Humidity	10% ~ 90% (non-condensing)
Dimension	441 (L) x 196 (W) x 44 (H) mm
Weight	2.61kg (Net)
Power Supply	100 ~ 240VAC, 50~60Hz Universal Input
Emission Certification	CE, FCC Class A

Application Diagram

24-Port Gigabit Ethernet Switch Application Diagram



ORDERING INFORMATION

Model	Description
UGS5824-RW (v2)	24-port Gigabit Web Smart Ethernet Switch (19")

EUSSO Technologies, Inc. is a dedicated data communication and networking company. With professional experiences in design, production, marketing and service support, we deliver the full range networking products including Gigabit Ethernet, Fiber Optic, Wireless LAN, Switches, Hubs, LAN cards, PCMCIA adapters, Converter, Transceivers. As well as Internet Telephony Gateway, Print Servers, Internet Sharing Servers and many others.

2006/7/28 ver 1.0



EUSSO Technologies, Inc.

6F, No.389, Sec.2, Chung Shan Road, Chung Ho City, Taipei 235-58, Taiwan

TEL:+886 (2) 8221-4616 E-mail:sales@eusso.com

FAX:+886 (2) 8221-4607 <http://www.eusso.com>