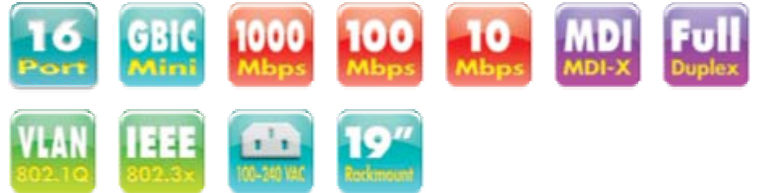


## UGS5816-RXG4

### 16-Port Unmanaged Gigabit Switch

#### with 4 Shared Mini-GBIC Ports



#### FEATURES

- 16 x 10/100/1000Mbps RJ-45 Ethernet ports
- Provides 4 x Mini-GBIC optional ports for easy expansion to other mini-GBIC equipped switch
- Complies with IEEE802.3, 802.3u, 802.3ab, 802.3x, and 802.3z standard
- Supports Auto MDI/MDI-X function on all ports
- Supports Auto Speed detection and Full/Half Duplex mode
- Dedicated bandwidth of up to 2000Mbps for maximum throughput
- Advanced Store-and-Forward package switching that optimizes data transfers
- Full-duplex 802.3x flow control and half duplex back-pressure
- Efficient MAC address learning engine supports 8K MAC address
- Integrated 340K bytes buffer memory and 9K jumbo frame
- Extensive LED indicators for network diagnostics

#### PACKAGE CONTENTS

- One 16-port Gigabit Rackmount Switch
- One User's Manual
- One AC Power Cord
- One set of Rack-mount Bracket with Screws

#### OVERVIEW

The UGS5816-RXG4 is a powerful, high-performance Gigabit Ethernet switch. Easily boost your networking throughput, the 19" unmanaged UGS5816-RXG4 provides 16\* 10/100/1000Mbps Gigabit RJ-45 ports that lead you to a real Gigabit connection. Users are now able to transfer large and high bandwidth-needed files faster and hence get a real efficiency improvement. In addition, 4 of shared additional Mini-GBIC ports allows future expanding to alternate transmission media like optical fiber for the long-distance communication to the server, storage or other switching devices that providing superior performance with exceptional value.

UGS5816-RXG4 offers users with fast and reliable network connection. The store-and-forward architecture filters errors and forwards packets in a non-blocking environment. Flow control ensures the correctness of data transmitting. The 802.3x and backpressure flow control mechanisms work respectively for full and half duplex modes.

The switch features with easy installation and maintenance. It supports Nway auto-negotiation protocol that detects the networking speed (10/100/1000Mbps) and the duplex modes (Full/Half) automatically. Auto MDI/MDI-X function alleviates the effort to use crossover cables.

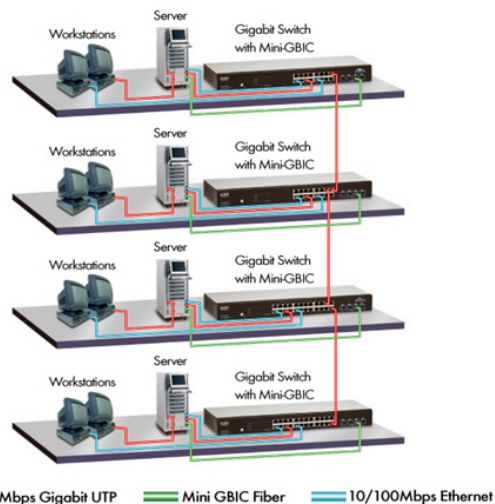
The switch is plug-n-play without any software to configure and also fully compliant with all kinds of network protocols. Moreover, the rich diagnostic LEDs on the front-panel can provide the operating status of individual port and whole system.

## SPECIFICATIONS

System Specifications	
Ethernet Standard	IEEE802.3 10BASE-T IEEE802.3u 100BASE-TX IEEE802.3ab 1000BASE-T / IEEE802.3z 1000Base-SX/LX IEEE802.3x Full duplex operation and flow control
Interface	16 * 10/100/1000Mbps RJ-45 Gigabit Ethernet ports (Port 1~16) 4 * Mini-GBIC Ports ( Port A,B,C,D )
Uplink	Auto MDI/MDI-X ( Auto Crossover )
Network Speed	10/100/1000Mbps & Full/Half duplex mode auto detection (1000Mbps for Full-duplex only)
Diagnostic LED	Power; Link/Act: 10/100 and 1000Mbps
MAC Address Entry	8K MAC entries
Memory	340K bytes buffer memory, 9K bytes jumbo frame
Filtering / Forwarding Rate	10Mbps: 14,880pps/14,880pps 100Mbps: 148,800pps/148,800pps 1000Mbps 1,488,100pps
Installation	19-inch Rack-Mount size
Operating Temperature	0° ~ 40°C (32° ~ 104°F)
Operation Humidity	10% ~ 90% (non-condensing)
Dimension	441 (L) x 130 (W) x 44 (H) mm
Weight	1.86kg
Power Supply	100 ~ 240VAC, 50~60Hz Universal Input
Emission Certification	CE, FCC Class A, VCCI Class A

## Application Diagram

16-Port Gigabit Ethernet Switch with Mini GBIC Application Diagram



## ORDERING INFORMATION

Model	Description
UGS5816-RXG4	16-port Gigabit Unmanaged Ethernet Switch with 4 Shared SFP Slots ( 19" )
UGM2010-MM	1-port Mini GBIC Module 1.25G Multi-Mode, 550m ( Module Option )
UGM2020-S10	1-port Mini GBIC Module 1.25G Single-Mode, 10km ( Module Option )

*EUSSO Technologies, Inc. is a dedicated data communication and networking company. With professional experiences in design, production, marketing and service support, we deliver the full range networking products including Gigabit Ethernet, Fiber Optic, Wireless LAN, Switches, Hubs, LAN cards, PCMCIA adapters, Converter, Transceivers. As well as Internet Telephony Gateway, Print Servers, Internet Sharing Servers and many others.*

2007/1/3 ver 1.0



**EUSSO Technologies, Inc.**

6F, No.389, Sec.2, Chung Shan Road, Chung Ho City, Taipei 235-58, Taiwan

TEL:+886 (2) 8221-4616 E-mail:sales@eusso.com

FAX:+886 (2) 8221-4607 <http://www.eusso.com>