

## UGS5816-RWG4

### 16-Port Web Smart Gigabit Switch

#### + 4 Shared Mini-GBIC Ports



#### FEATURES

- 16 x 10/100/1000Mbps RJ-45 Ethernet ports
- Provides 4 x SFP (Mini-GBIC) shared expansion ports for alternative optical fiber connection
- User friendly remote Web-based management and Auto- discovery software management utility
- Supports 802.1q VLAN, up to 16 VLAN groups
- Provides RS-232 configuration console port
- Supports Port Trunking up to 8 ports and 8 groups port aggregation to allow increase bandwidth
- Supports port base, tag base, DSCP priority and QoS function for better communication quality
- Supports Rate Limit (ICMP Rate, Broadcast Rate, Multicast Rate, Ingress/Egress)
- Efficient MAC address learning engine supports up to 8K MAC addresses and integrated 340K bytes buffer memory and 9K bytes jumbo frame
- Supports SNMP and firmware upgrade
- All ports support auto MDI/MDI-X cable detection
- Advanced Store-and-Forward package switching that optimizes data transfers

#### PACKAGE CONTENTS

- One 16-port Gigabit Web Smart Switch
- One User's Manual
- One AC Power Cord
- One set of Rack-mount Bracket with Screws

#### OVERVIEW

UGS5816-RWG4, the 16-port 10/100/1000Mbps Gigabit Web Smart Switch compare to the traditional 10/100Mbps Ethernet, the switch delivers a dedicated Gigabit connection to every attached client with no congestion issue. The gigabit ports also provide the fat pipe to the server or backbone connectivity for boosting the total system performance.

Additional 4 of shared Mini-GBIC (SFP) ports allows future expanding to alternate transmission media like optical fiber for the long-distance communication to the server, storage or other switching devices that providing superior performance with exceptional value.

Out of the ordinary dumb switches, the 16-port Gigabit Web Smart Switch embedded advanced management capability; that the device can be managed through console port or web-based UI. This is much useful for system manager to monitor and control the system efficiently. Store-and-forward switching mode promises the low latency plus eliminates all the network errors, including runt and CRC error packets. To work under full-duplex mode, transmission and reception of the frames can occur simultaneously without causing collisions as well as double the network bandwidth. It also support Spanning Tree function that provides protection from unintentional cabling loops forming within a network infrastructure.

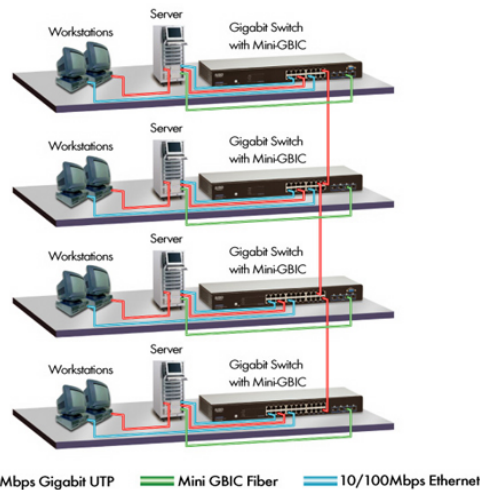
The switch is plug-n-play without any software to configure and also fully compliant with all kinds of network protocols. Moreover, the rich diagnostic LEDs on the front-panel can provide the operating status of individual port and whole system. It is also fully rack-mountable unit that is easy to integrate into your network infrastructure.

## SPECIFICATIONS

System Specifications	
<b>Ethernet Standard</b>	IEEE802.3 10BASE-T IEEE802.3u 100BASE-TX IEEE802.3ab 1000BASE-T / IEEE802.3z 1000Base-SX/LX IEEE802.3q Tag-Based VLAN IEEE802.3p Traffic Prioritization IEEE802.3x Full duplex operation and flow control
<b>Interface</b>	16 * 10/100/1000Mbps RJ-45 Gigabit Web Smart Ethernet ports (Port 1~16) 4 * Mini-GBIC Ports ( Port A,B,C,D ) 1 * RS-232 Console Port
<b>Uplink</b>	Auto MDI/MDI-X ( Auto Crossover )
<b>Network Speed</b>	10/100/1000Mbps & Full/Half duplex mode auto detection (1000Mbps for Full-duplex only)
<b>Diagnostic LED</b>	Power; Link/Act: 10/100 and 1000Mbps
<b>MAC Address Entry</b>	8K MAC entries
<b>Memory</b>	500K bytes buffer memory, 9K bytes jumbo frame
<b>Filtering / Forwarding Rate</b>	10Mbps: 14,880pps/14,880pps 100Mbps: 148,800pps/148,800pps 1000Mbps 1,488,100pps
<b>Installation</b>	19-inch Rack-Mount size
<b>Operating Temperature</b>	0° ~ 40°C (32° ~ 104°F)
<b>Operation Humidity</b>	10% ~ 90% (non-condensing)
<b>Dimension</b>	441 (L) x 130 (W) x 44 (H) mm
<b>Weight</b>	1.865kg
<b>Power Supply</b>	100 ~ 240VAC, 50~60Hz Universal Input
<b>Emission Certification</b>	CE, FCC Class A, VCCI Class A

## Application Diagram

16-Port Gigabit Ethernet Switch with Mini GBIC Application Diagram



## ORDERING INFORMATION

Model	Description
UGS5816-RWG4	16-port Gigabit Web Smart Ethernet Switch with 4 Shared SFP Slots ( 19" )
UGM2010-MM	1-port Mini GBIC Module 1.25G Multi-Mode, 550m ( Module Option )
UGM2020-S10	1-port Mini GBIC Module 1.25G Single-Mode, 10km ( Module Option )

*EUSSO Technologies, Inc. is a dedicated data communication and networking company. With professional experiences in design, production, marketing and service support, we deliver the full range networking products including Gigabit Ethernet, Fiber Optic, Wireless LAN, Switches, Hubs, LAN cards, PCMCIA adapters, Converter, Transceivers. As well as Internet Telephony Gateway, Print Servers, Internet Sharing Servers and many others.*

2007/1/3 ver 1.0



**EUSSO Technologies, Inc.**

6F, No.389, Sec.2, Chung Shan Road, Chung Ho City, Taipei 235-58, Taiwan

TEL:+886 (2) 8221-4616 E-mail:sales@eusso.com

FAX:+886 (2) 8221-4607 <http://www.eusso.com>